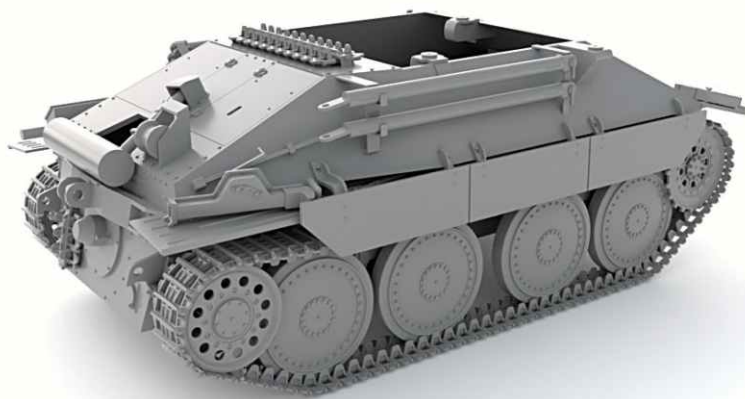


# 35102, 35103

產品編號：35102, 35103

# scale 1/35

1:35 比例



## 1/35 German Bergepanzer Hetzer Early

Go through this assembly guide and understand it before you start kit assembly  
Use usual plastic kit's cements and tools (not included in the kit)  
Follow painting guide supplied, use only hobby paints  
Work carefully with photo etched parts if included, use C/A glues to assemble them

請您在組裝此產品前仔細閱讀組裝指南；  
請使用通用塑膠模型黏合劑和工具(本產品不附帶)；  
本產品所以提供的噴塗指南只適用本於模型；  
如果本產品含有蝕刻套件,請小心仔細處理，請使用C/A膠水組裝；



cut/remove

切下 / 移除



drill hole

鑽孔



no glue

不適用膠水



bend

折彎



cyanoacrylate glue

氰基丙烯酸酯膠水



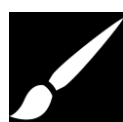
string or wire

細繩或者金屬絲線



rope

繩



painting area during assembly  
recommended (ref. to AMMO colors)

裝配過程中的噴漆區域推薦  
(請參考AMMO顏色)



PE - press rivets (lines)  
from the etched off side

蝕刻片 -  
請从蚀刻掉的一侧压铆钉 (线)

Bergerpanzer 38(t) was a recovery vehicle based on Hetzer's base, with lower open-top superstructure, manufactured by BMM company in Prague. The plans were approved in September 1944 and called for production of 170 vehicles until the end of 1944. In fact just 101 vehicles were built. To meet the production plans it was decided to convert 64 summer production's Hetzers into armoured recovery vehicles, but it is unknown how many were actually converted. Production was much slower than plans, and total number of about 180 vehicles was finished until the end of the war.

The Bergepanzer was equipped with two-ton folding jib crane used to handle engines and other heavy components. Additionally the recovery vehicle was equipped with five-ton winch of Baumgarten company. The winch was driven by the vehicle's engine through transmission system. At the end a blade was installed at the rear of the hull, but it is again unclear how many vehicles were equipped with it. There were also some development works to install the blade at the front of the vehicle, as seen in the company blueprints, but probably these plans were never realized.

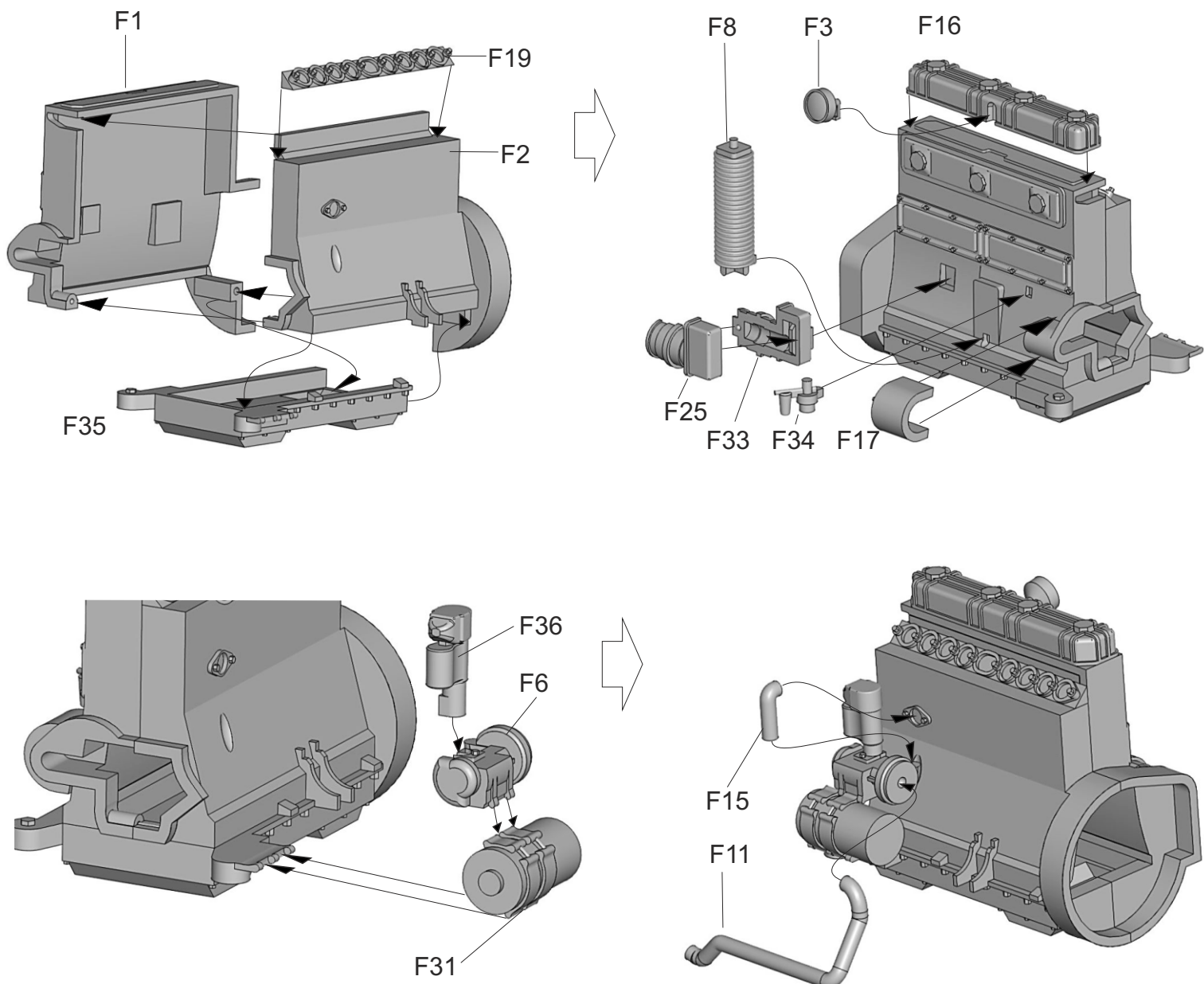
Early Bergehetzer variant was mostly equipped with early type of road wheels and idler wheels, it had different towing eyes, the front armor was thinner than Late variant, its engine cover was early type without two additional small access hatches, with early type of exhaust muffler. The rear support blade was developed later and installed on the Late Bergehetzer variant only.

Kit TM35102 Standard edition (excludes engine compartment, mudguards and skirts molded in plastic)

Kit TM35103 Limited Bonus Edition (includes engine compartment and additional PE set mudguards, skirts)

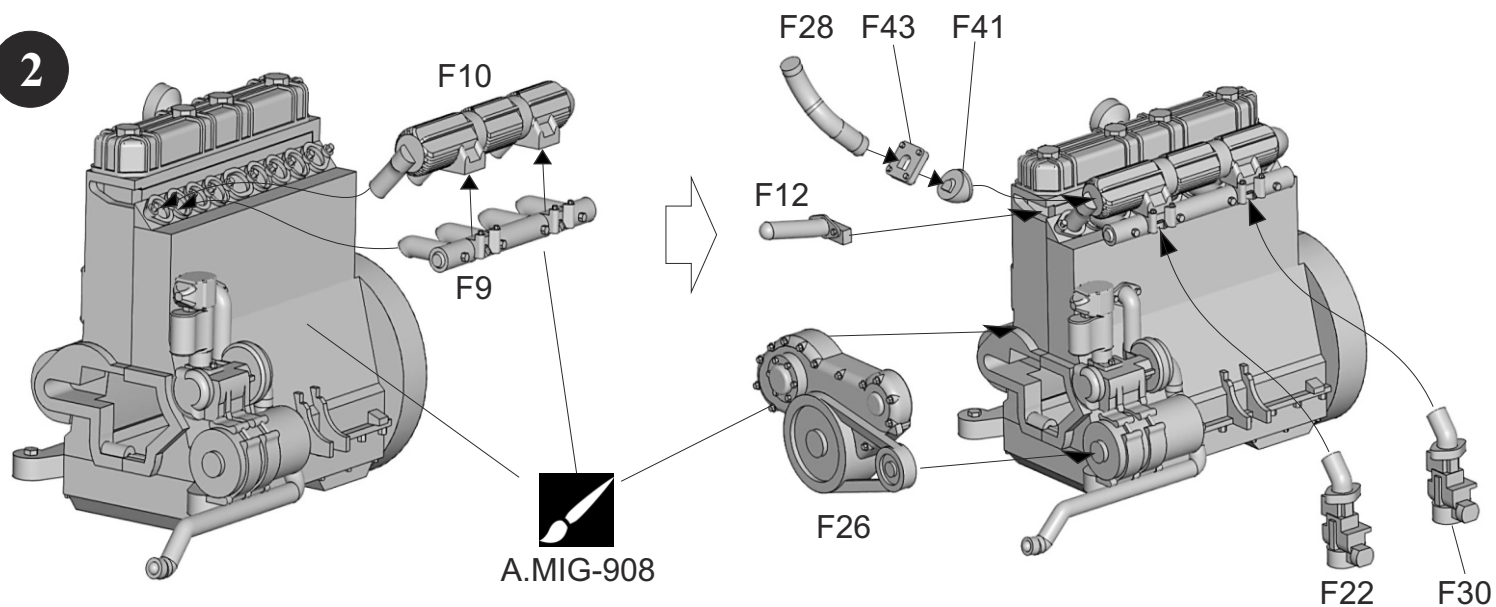
#### Engine assembly (Limited Bonus Edition only)

1

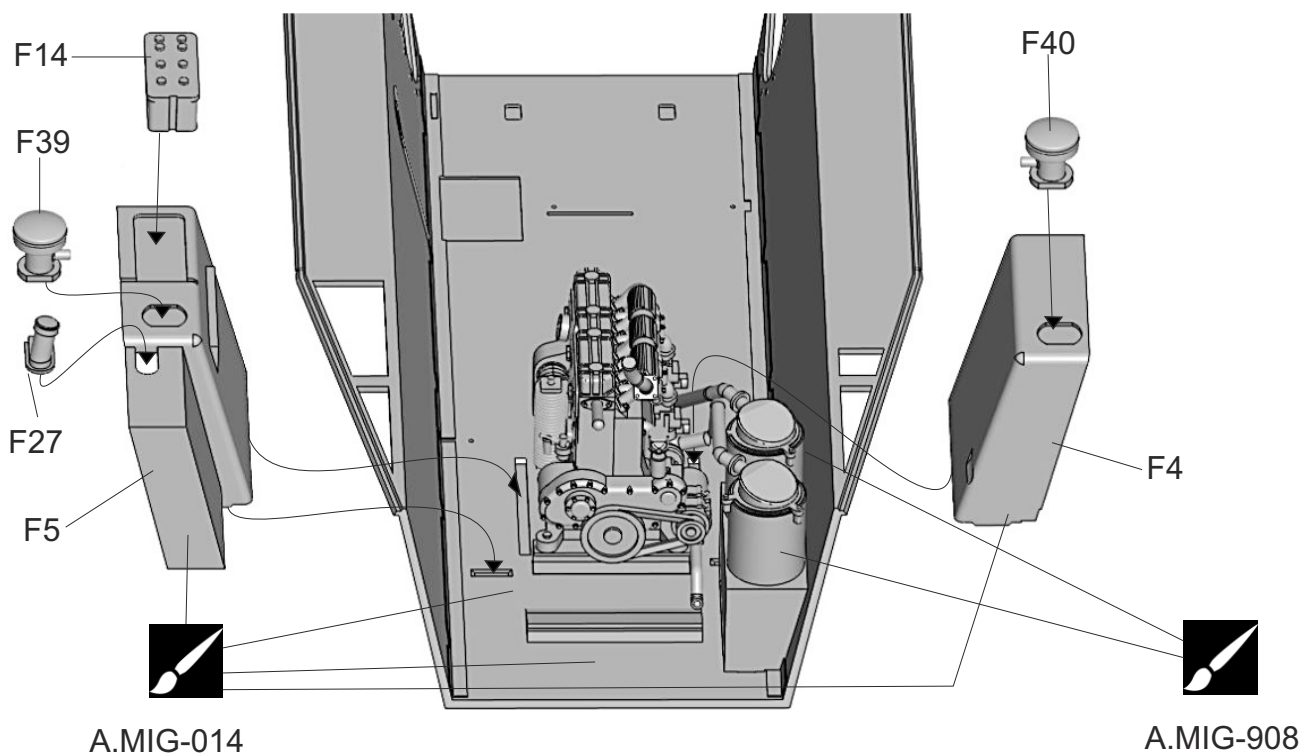
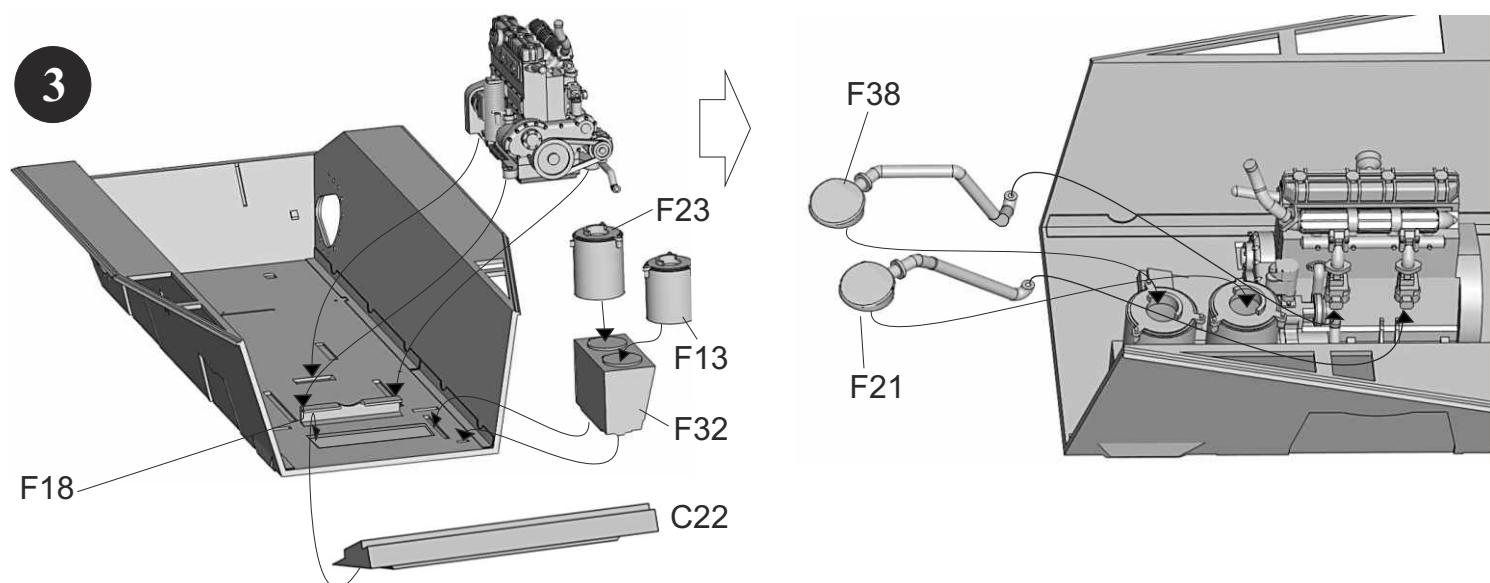


2

2



3







A.MIG-035

F29

F20

F37

4

A.MIG-014



F7

F24



A.MIG-908

## Hull assembly



20x C20

C14

fill outer holes  
after C20  
assembled  
inside

5

D7+D8

D2

B15

B65

PE 1

C/A

PE2

E9

D2

E8

D2

D8

D7

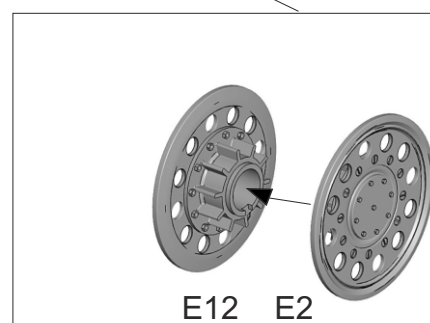
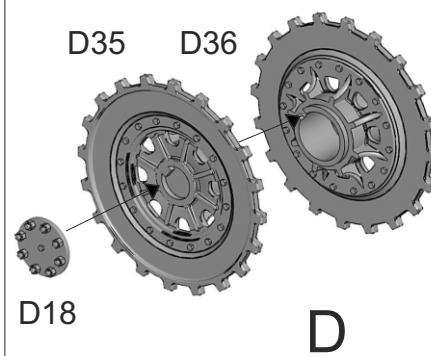
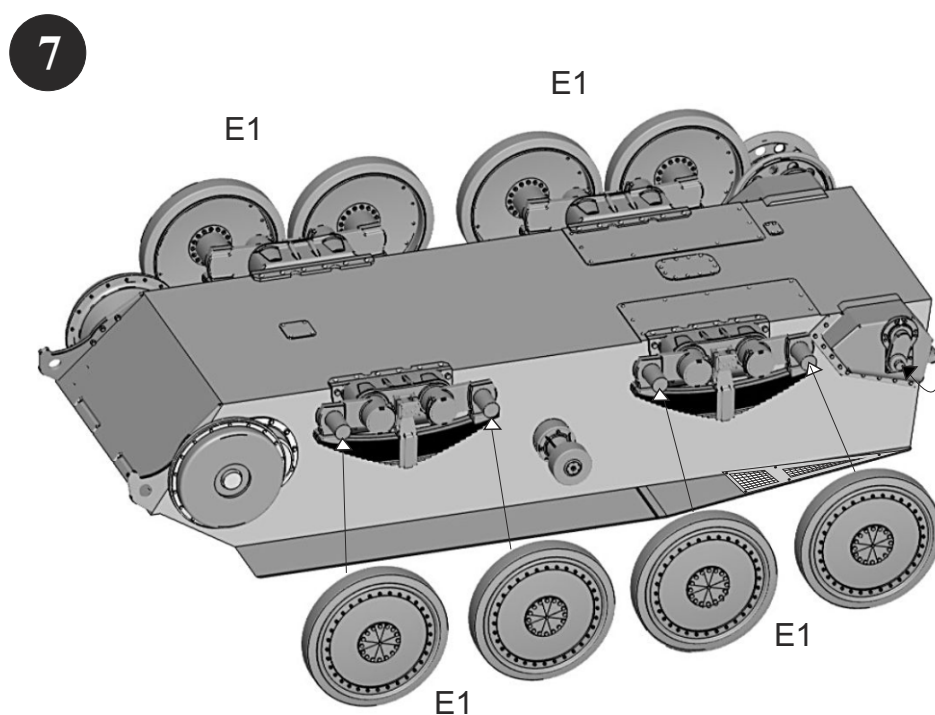
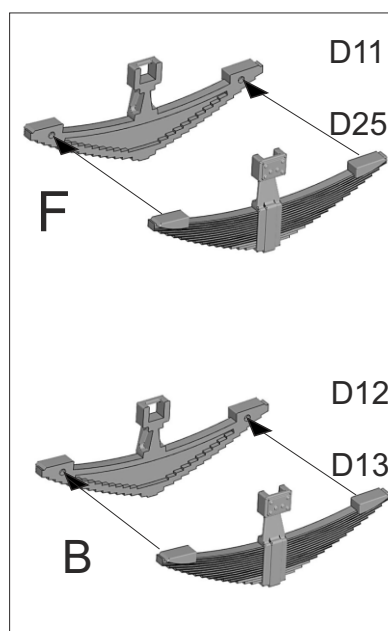
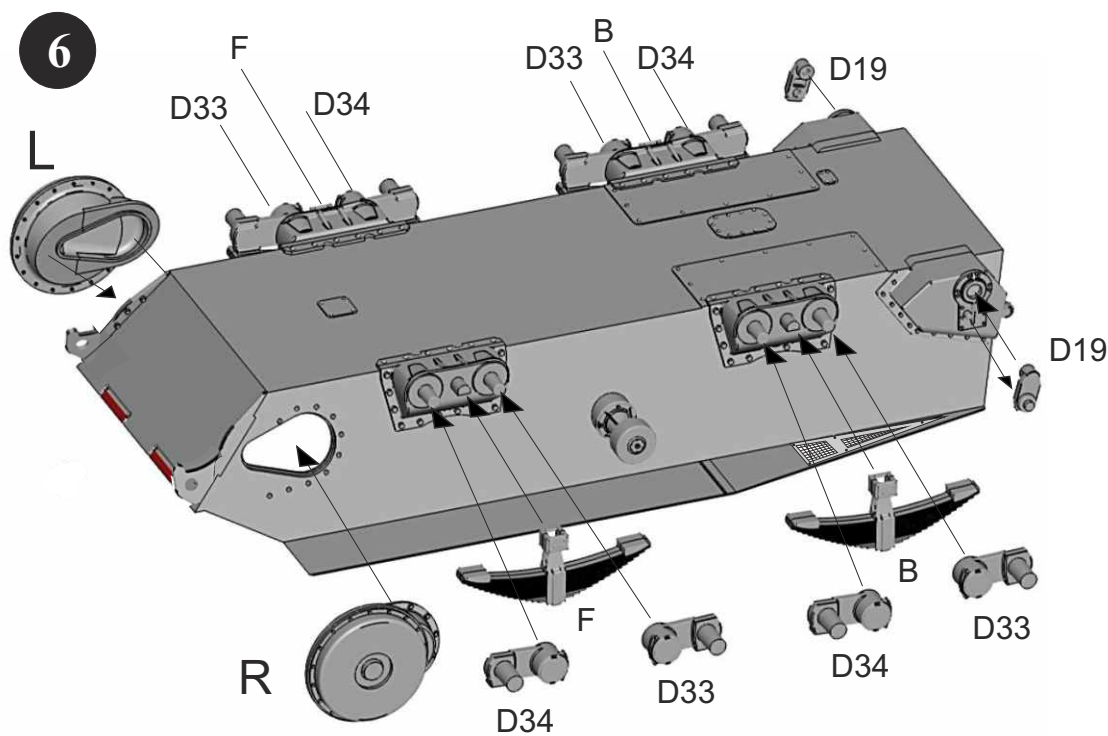
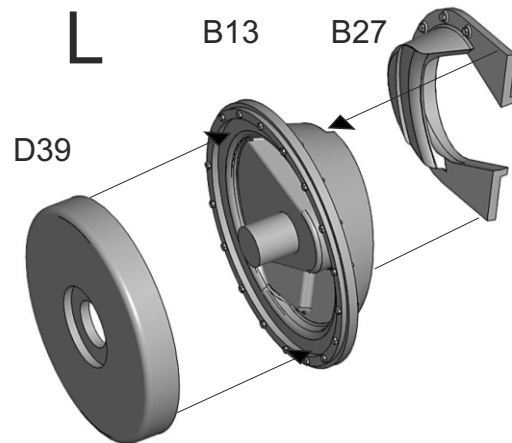
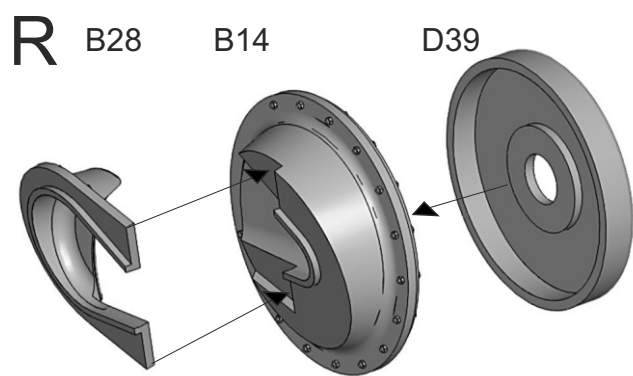
D2

B16

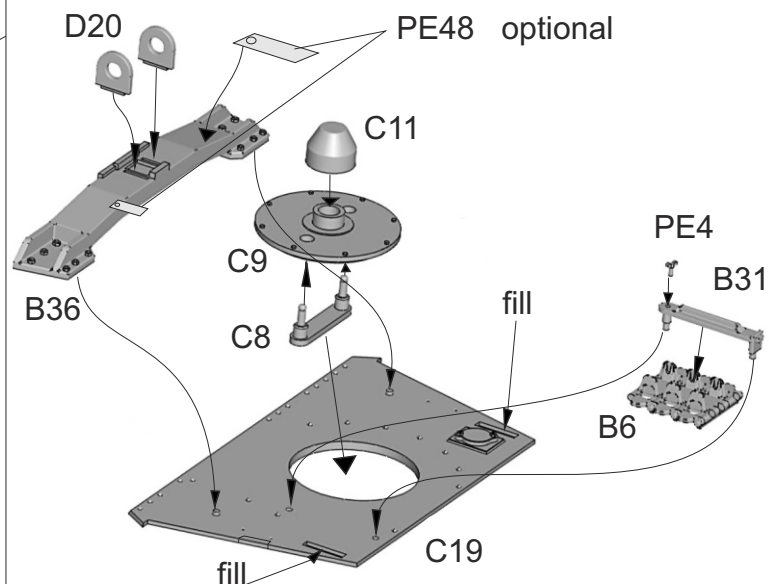
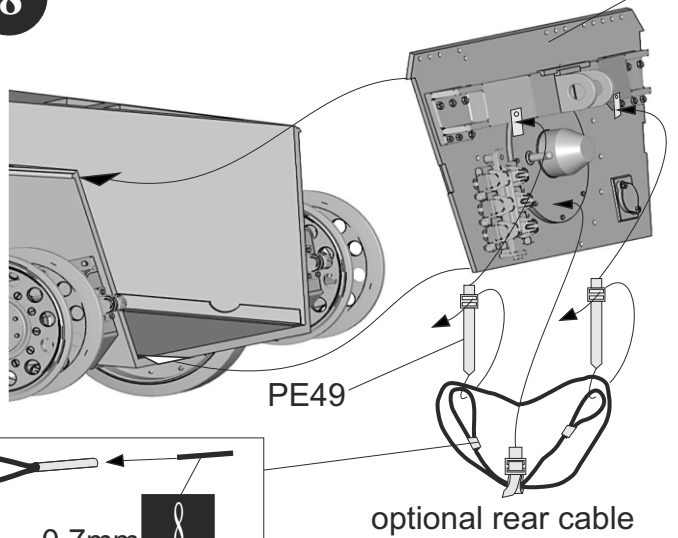
B64

4

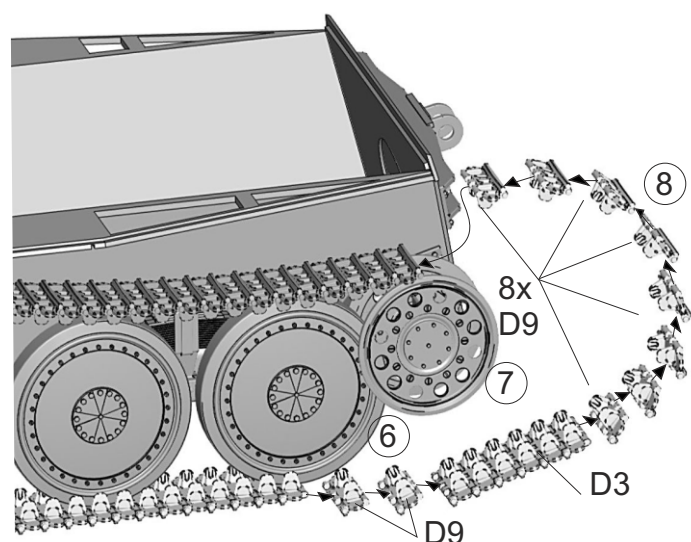
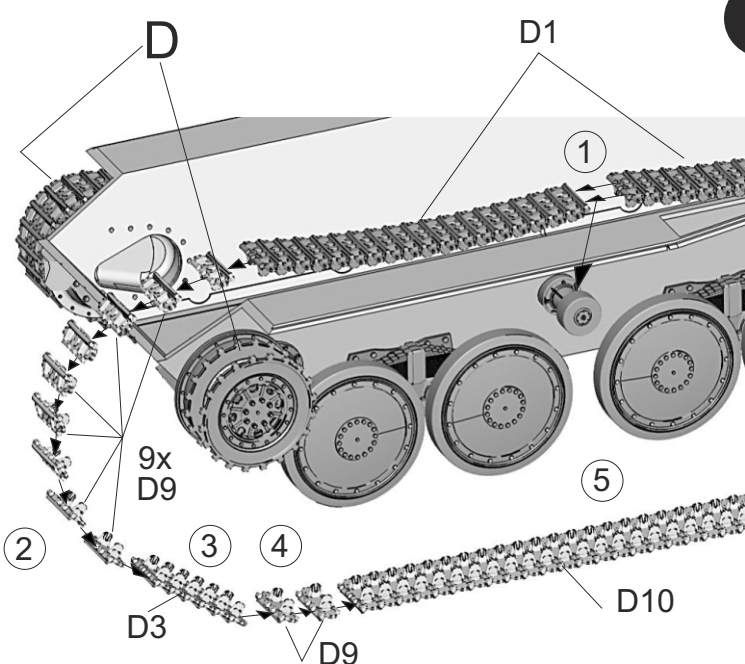




8

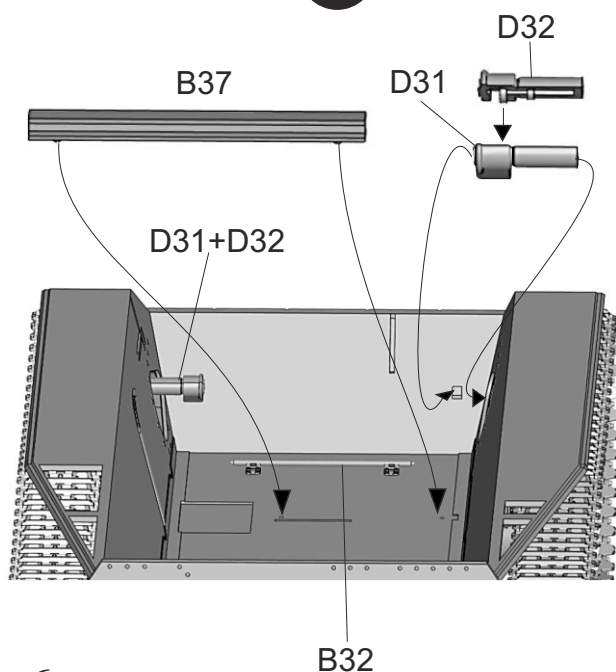


9

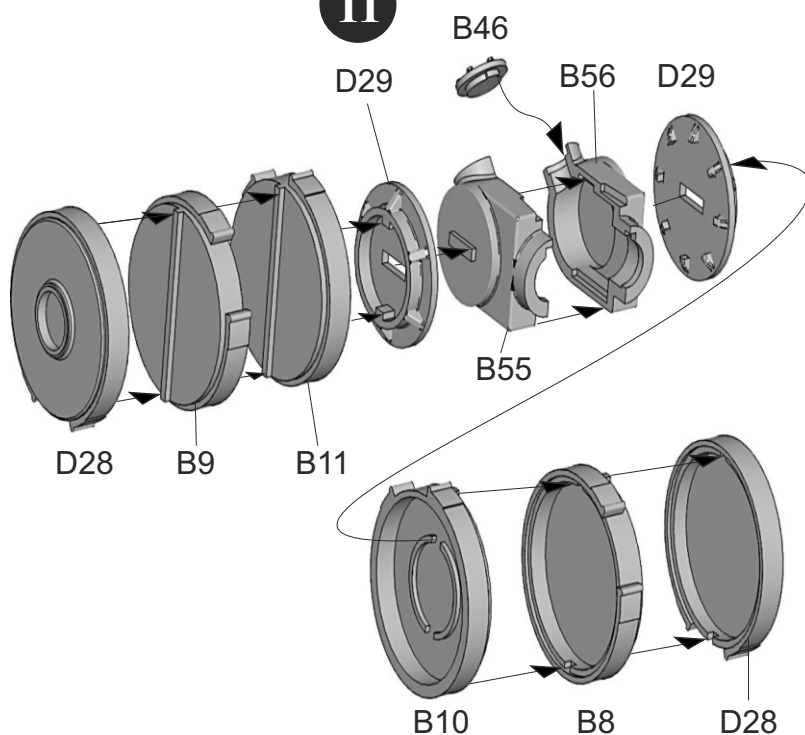


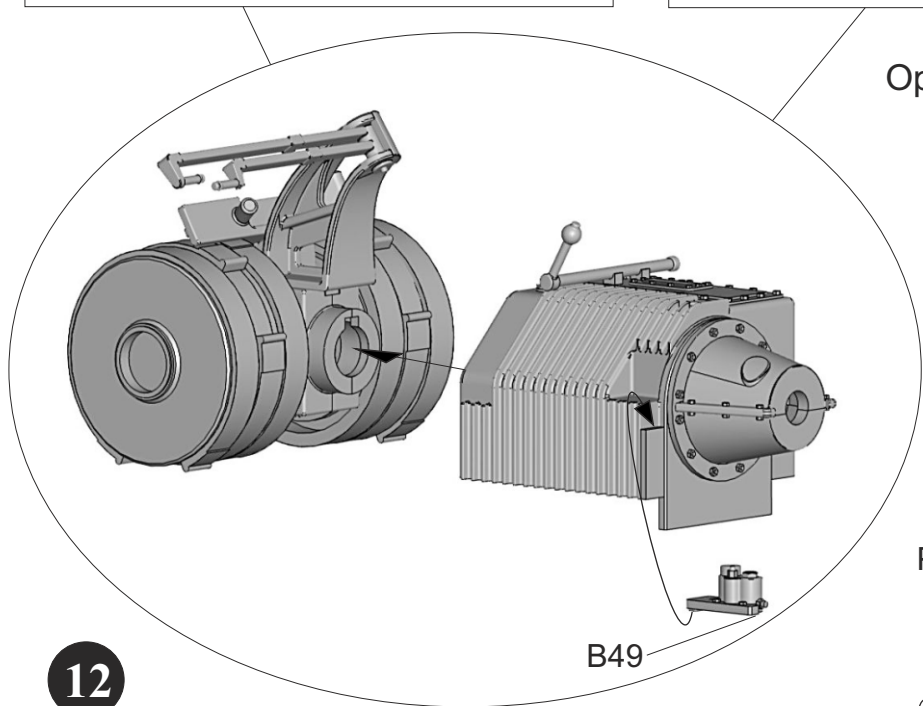
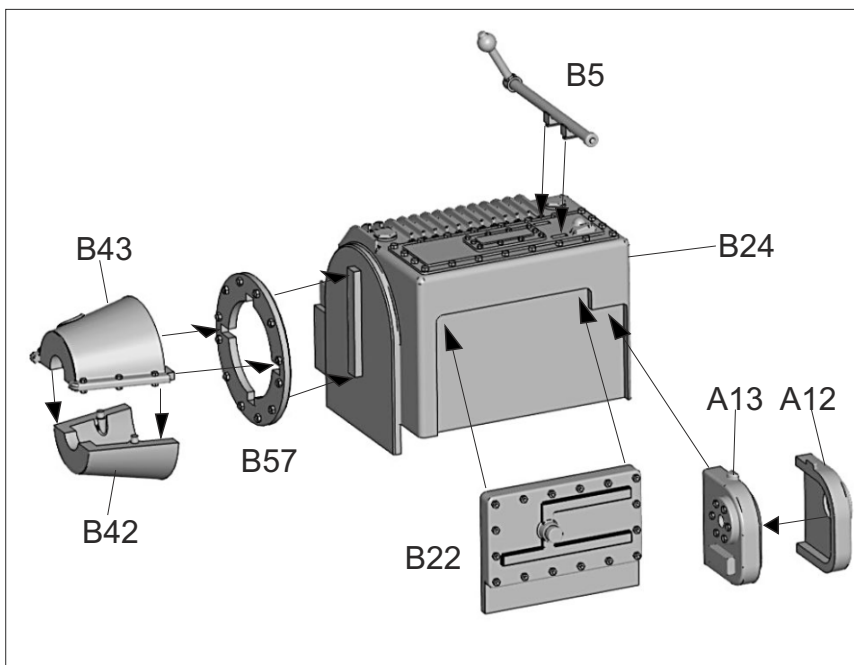
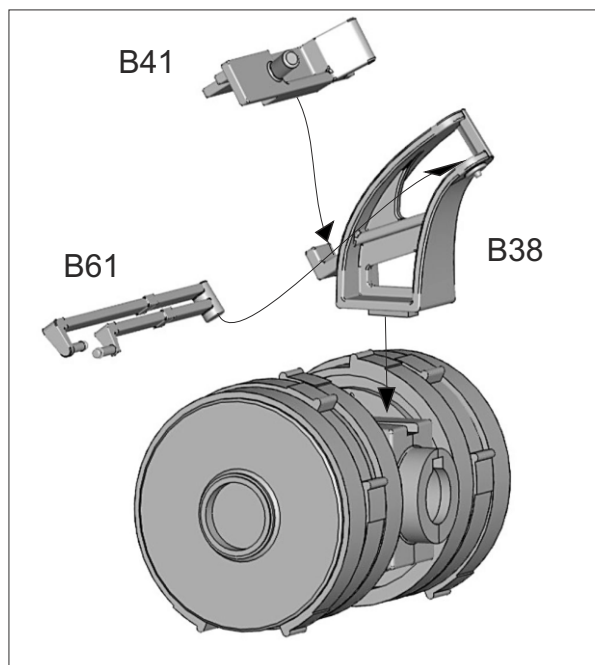
Interior assembly

10



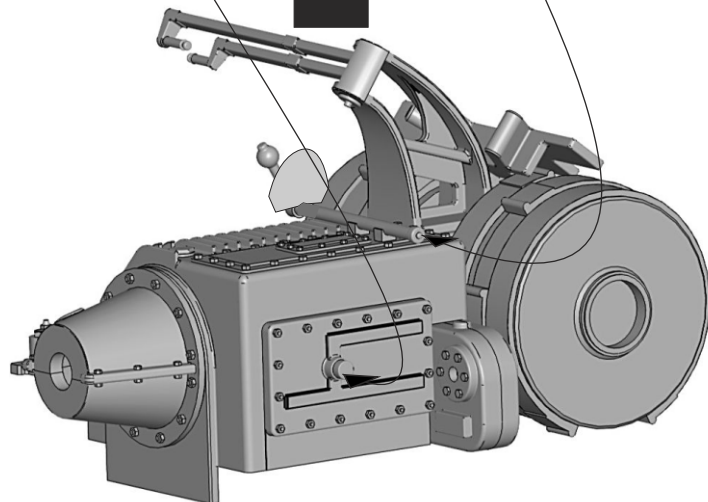
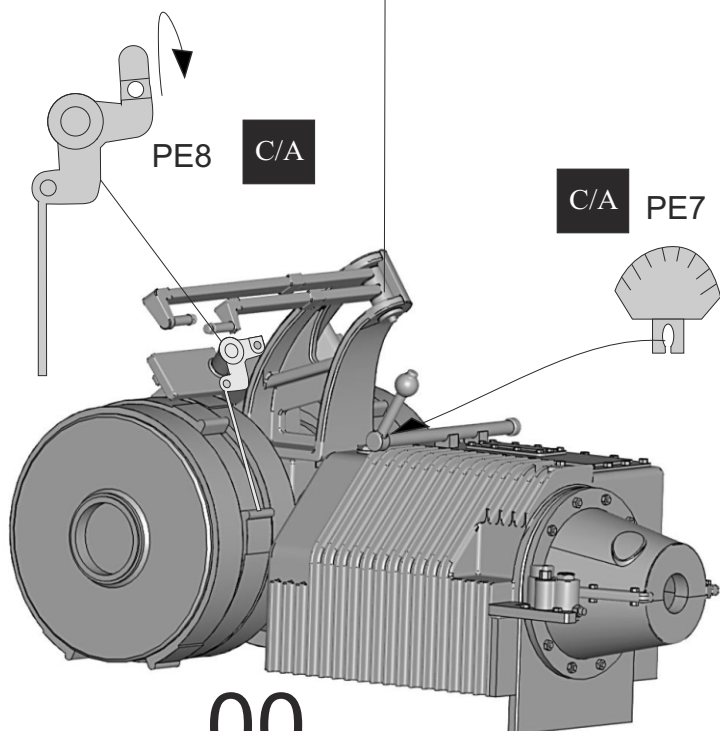
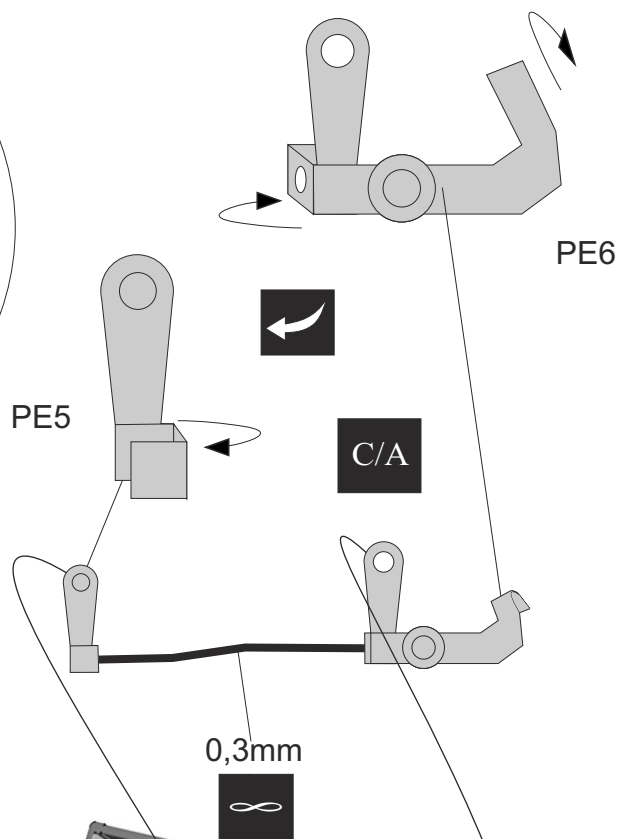
11





Optional detail - PE 5,6,8,9,10,11,12

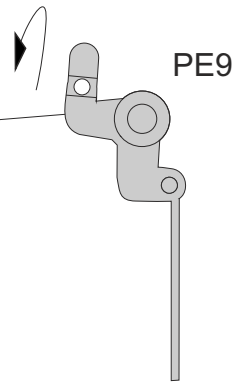
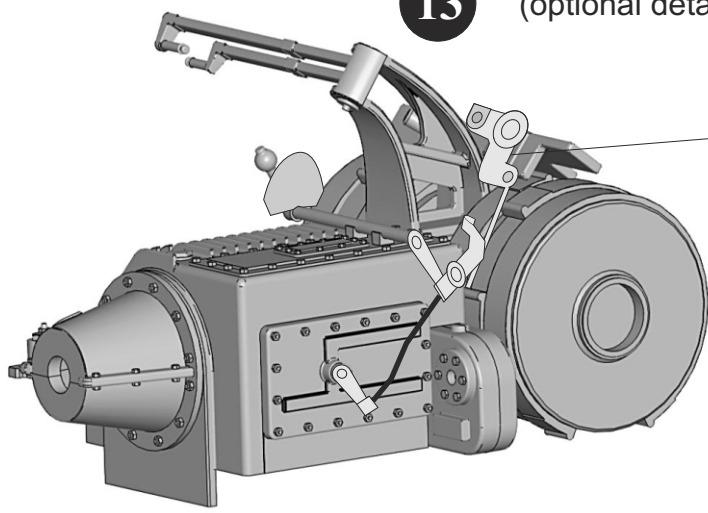
12



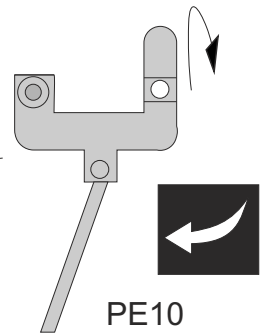
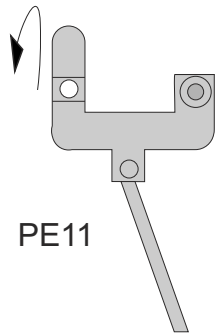
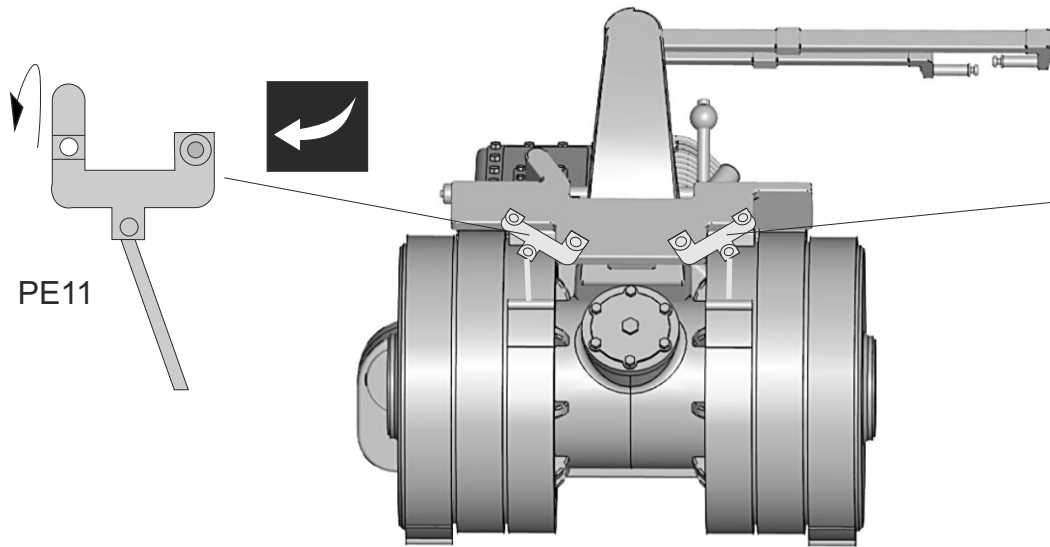


13

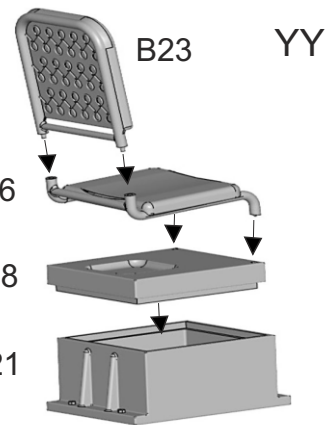
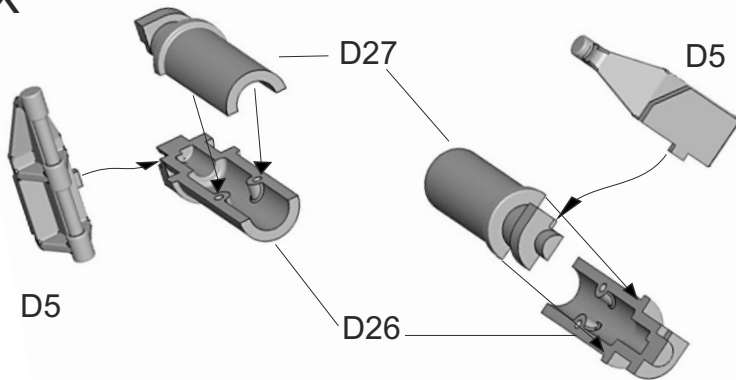
(optional detail)



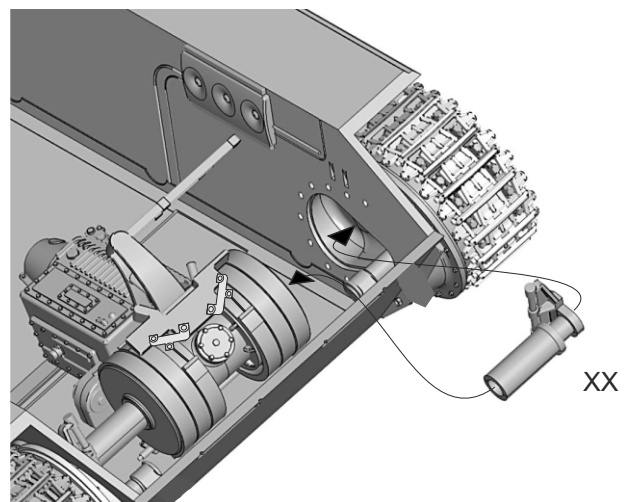
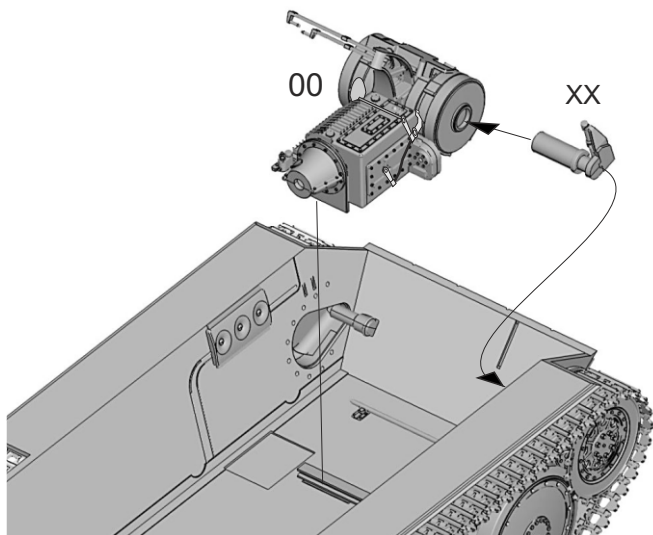
C/A



XX

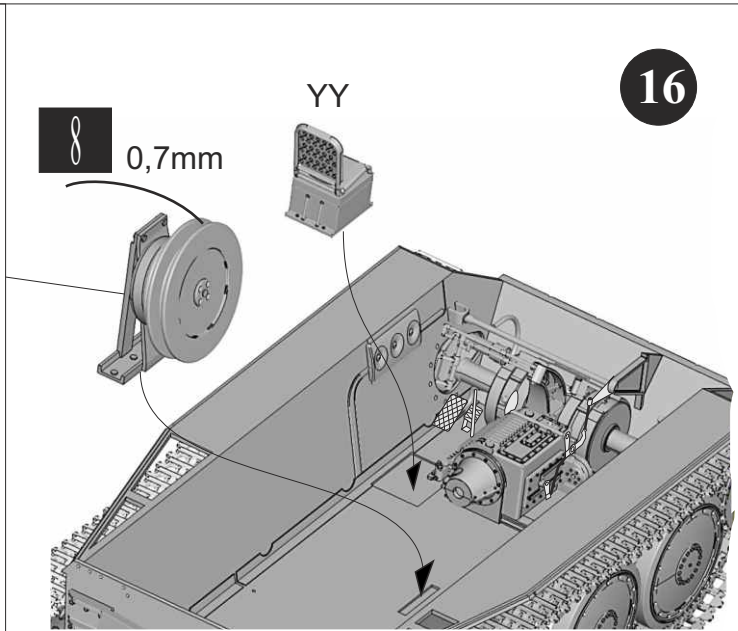
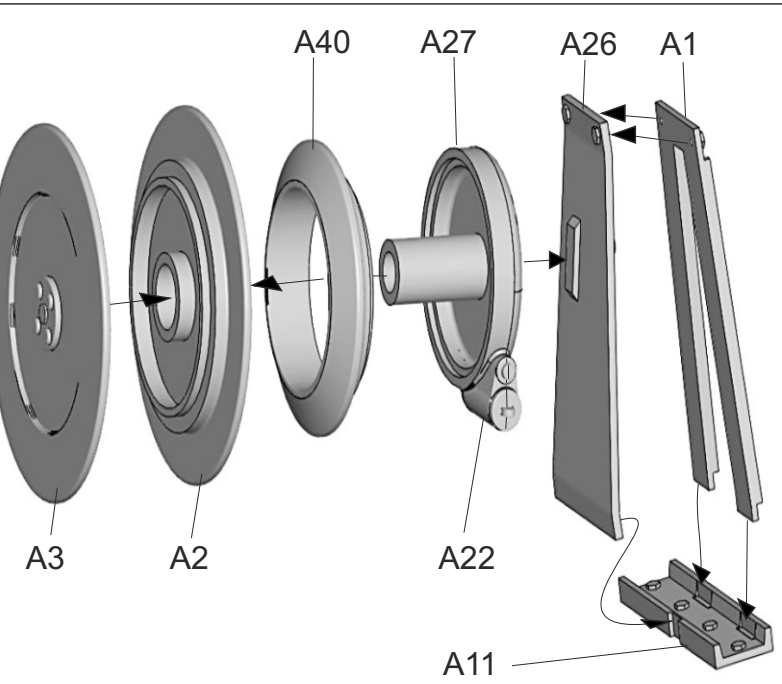
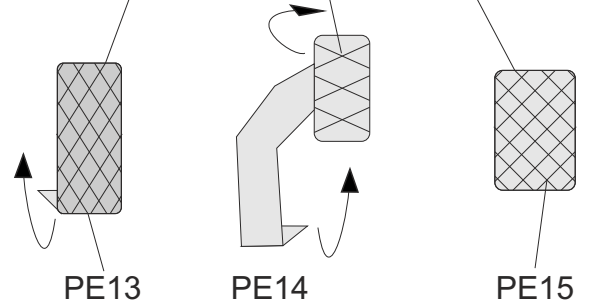
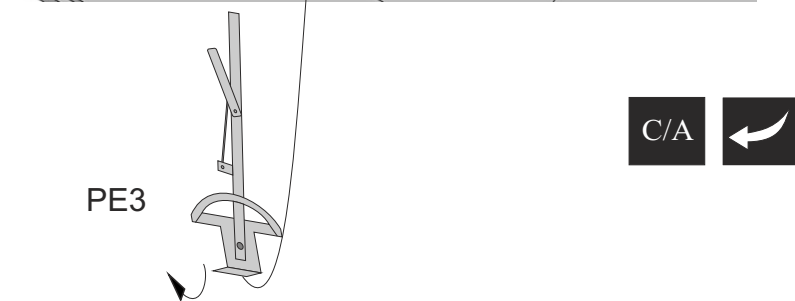
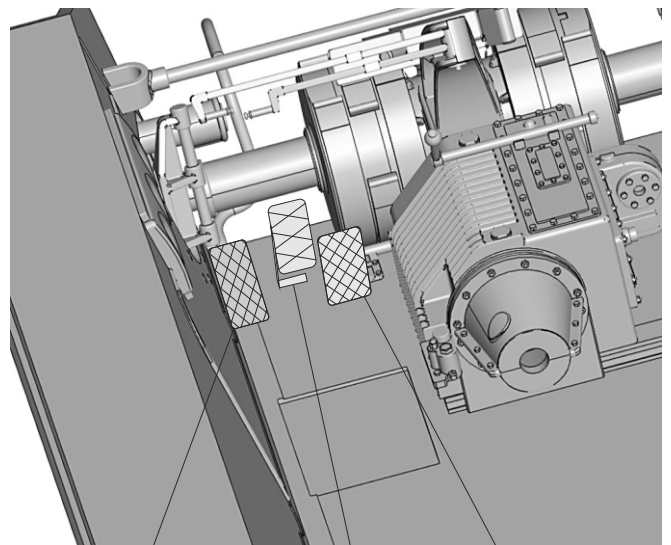
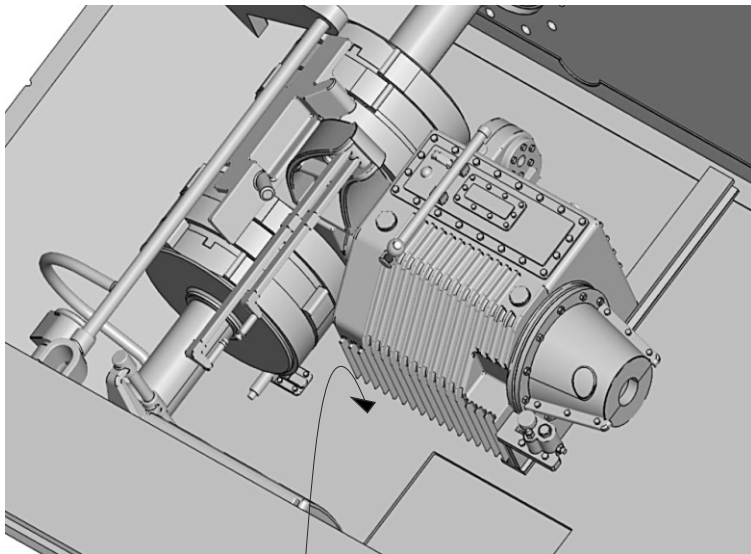
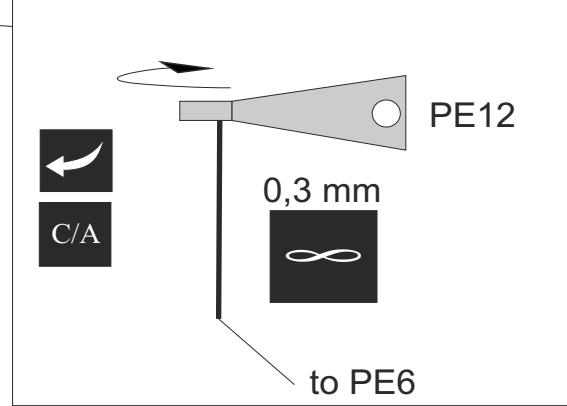
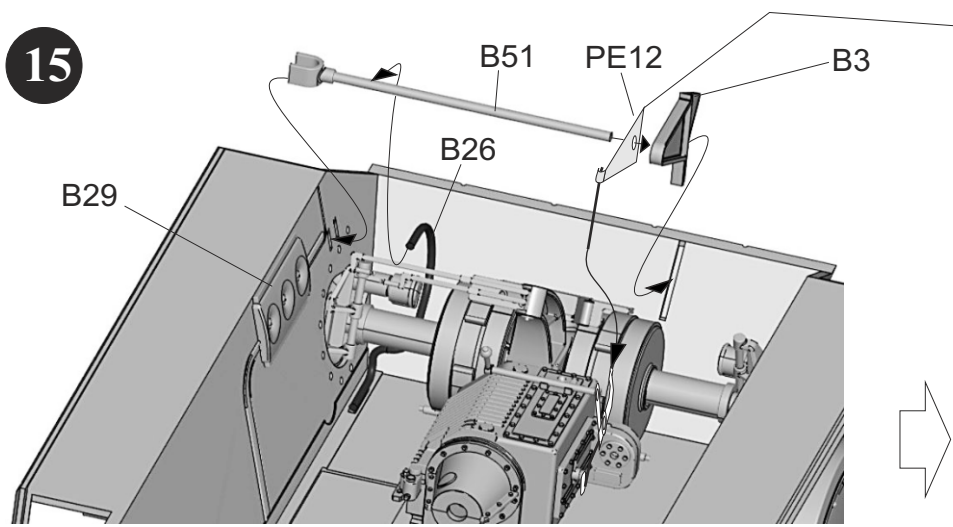


14



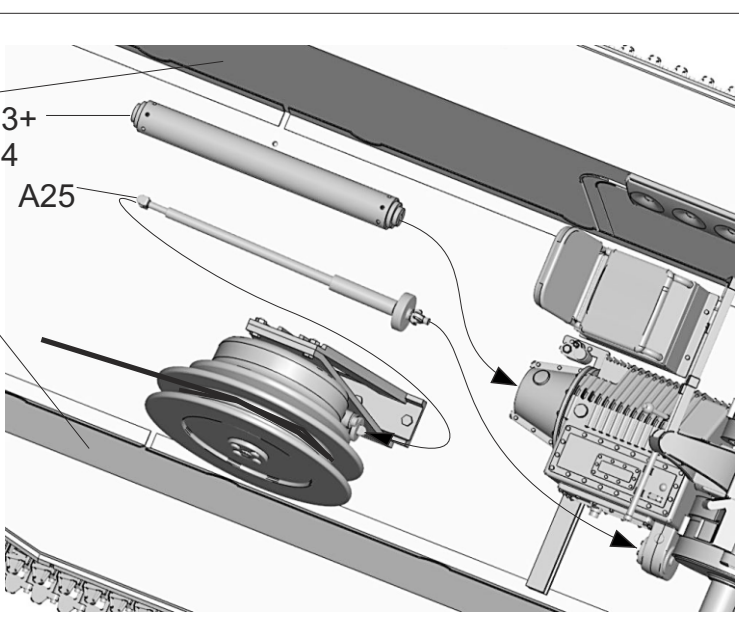
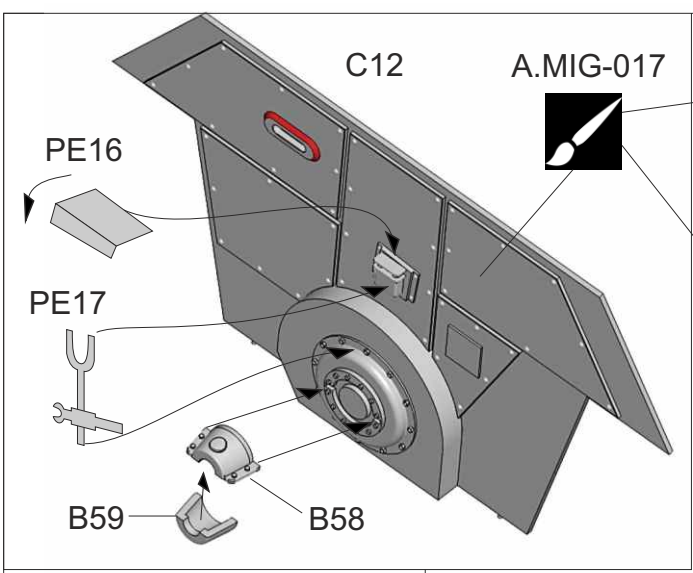
8

15

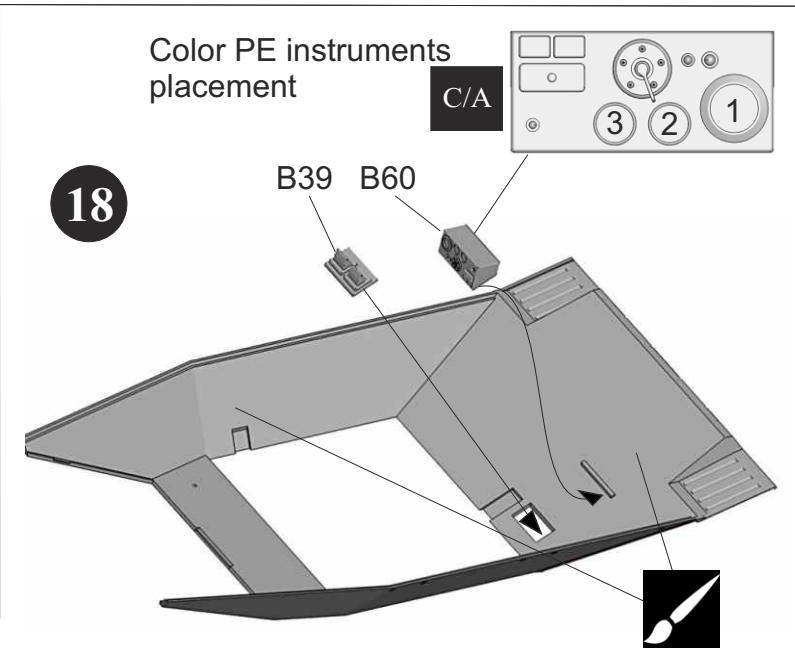
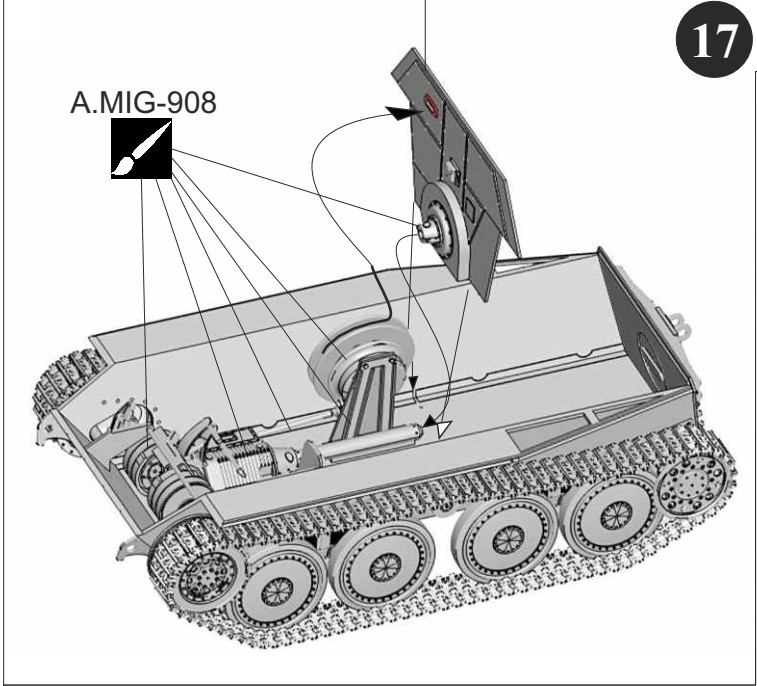


16

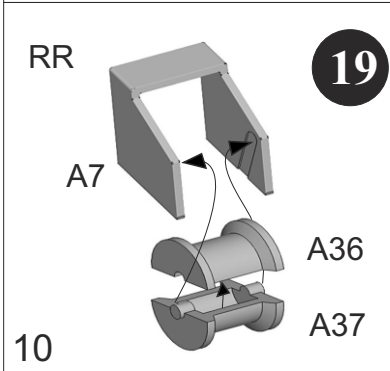
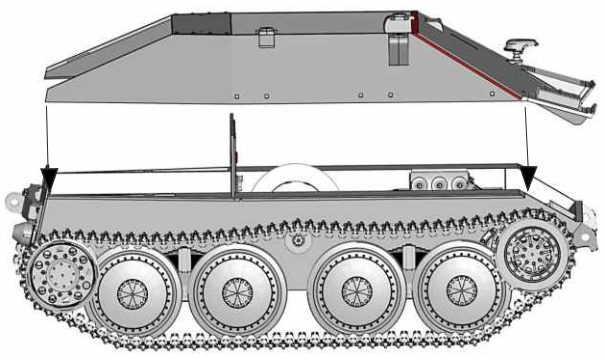
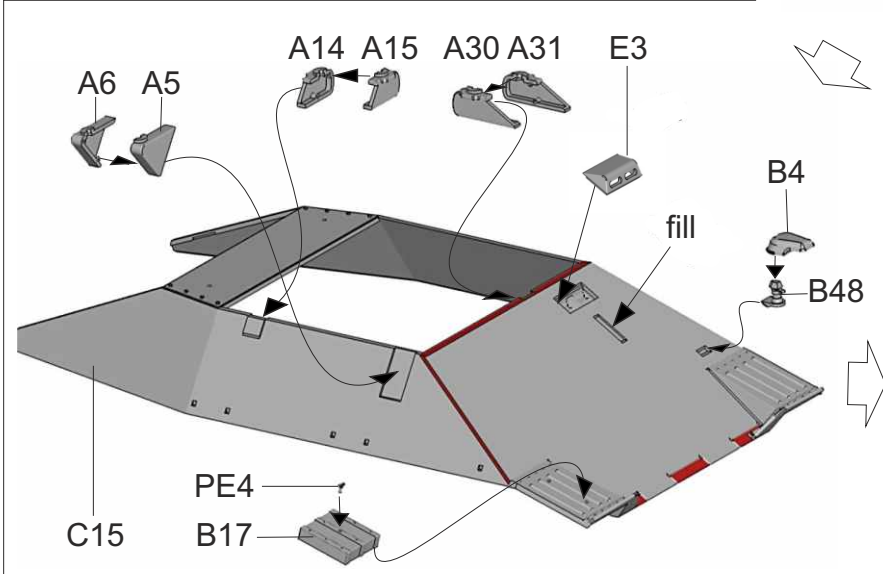




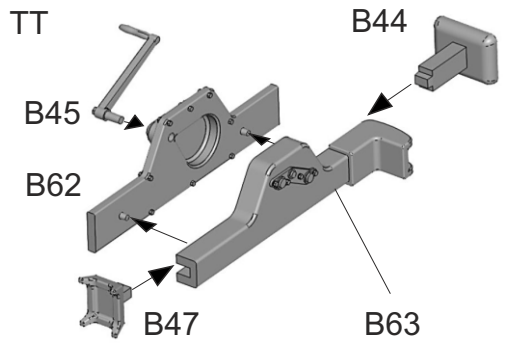
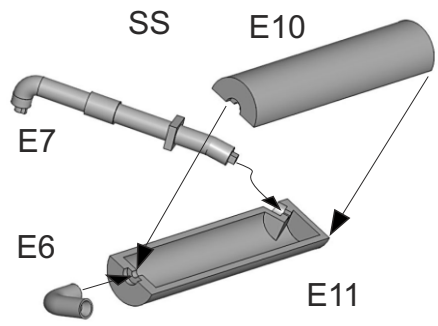
17



18

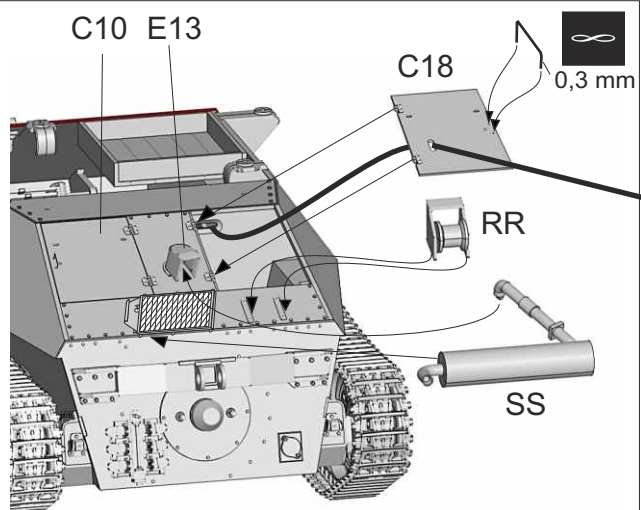
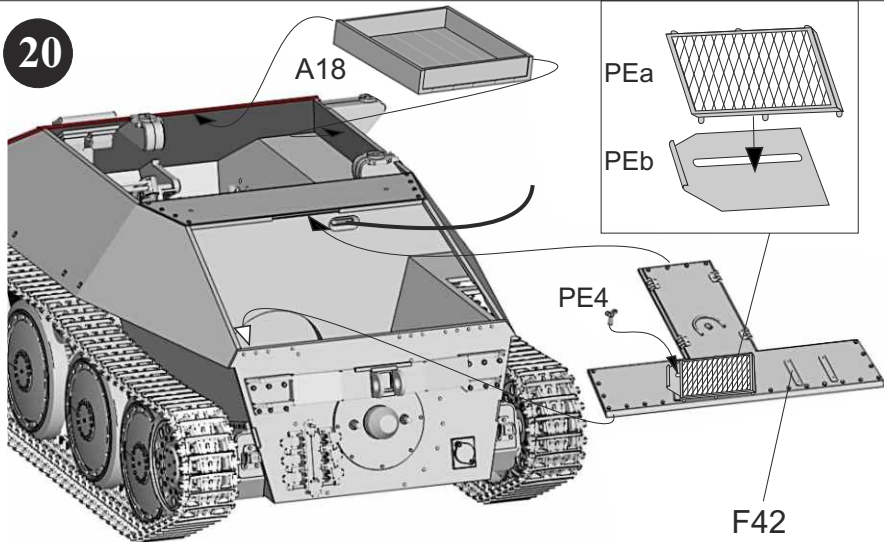


19



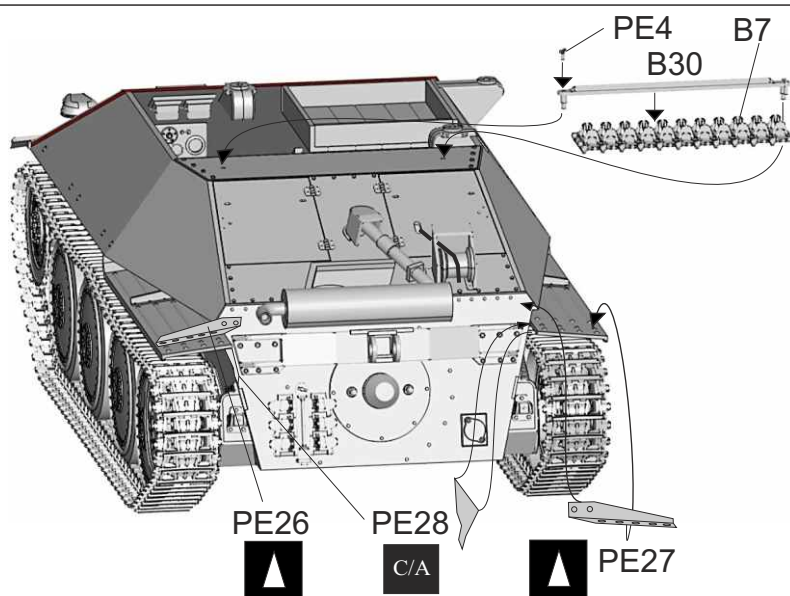
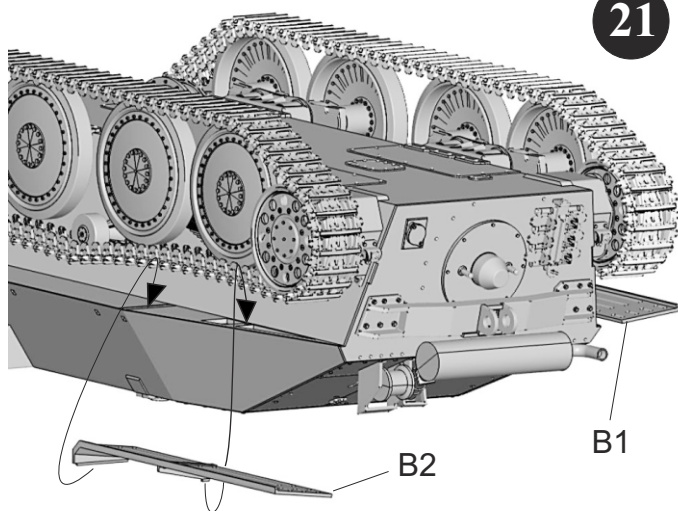


20

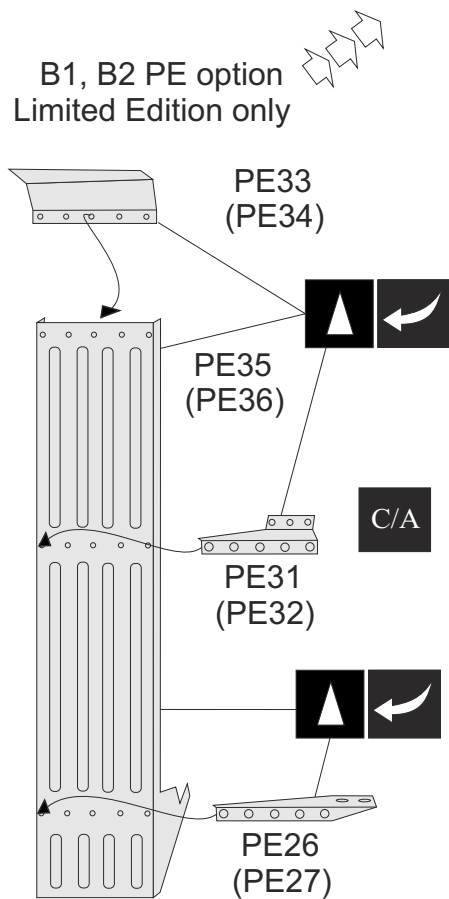


C10, C18 open or closed

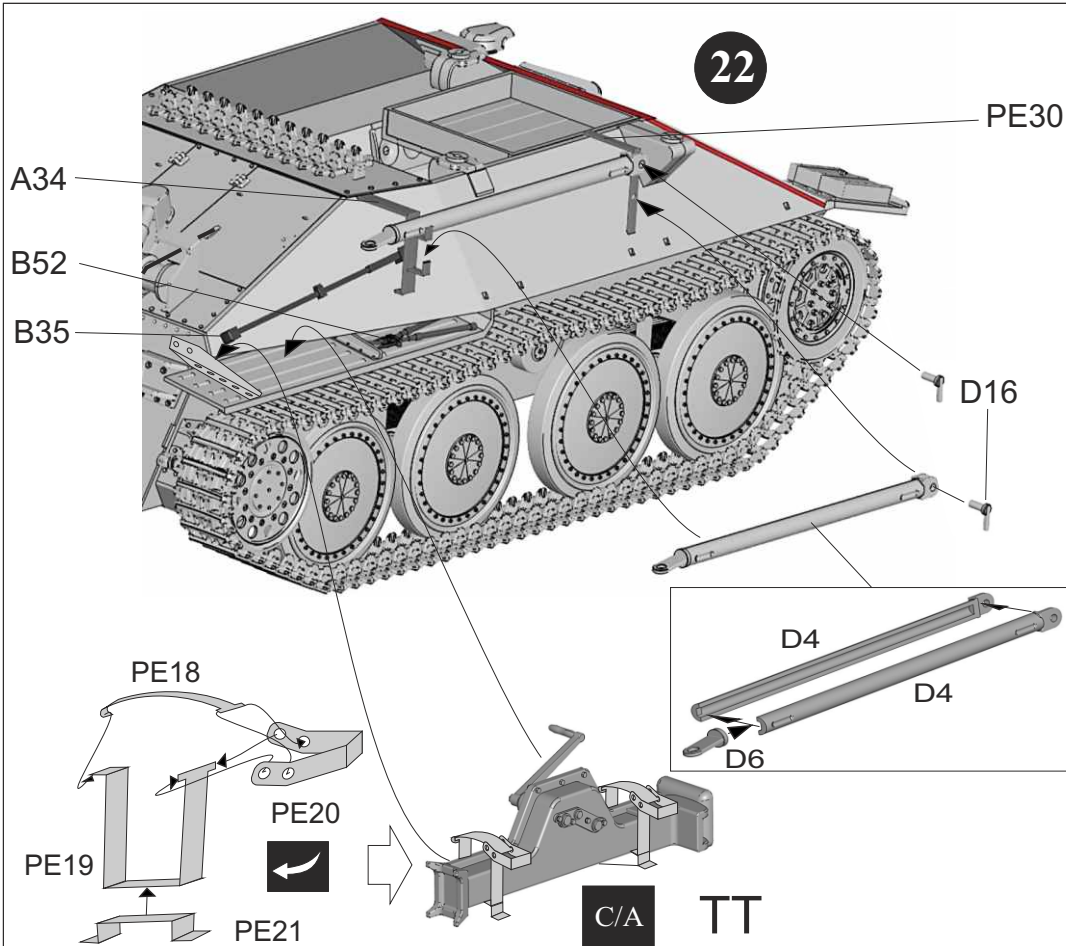
21



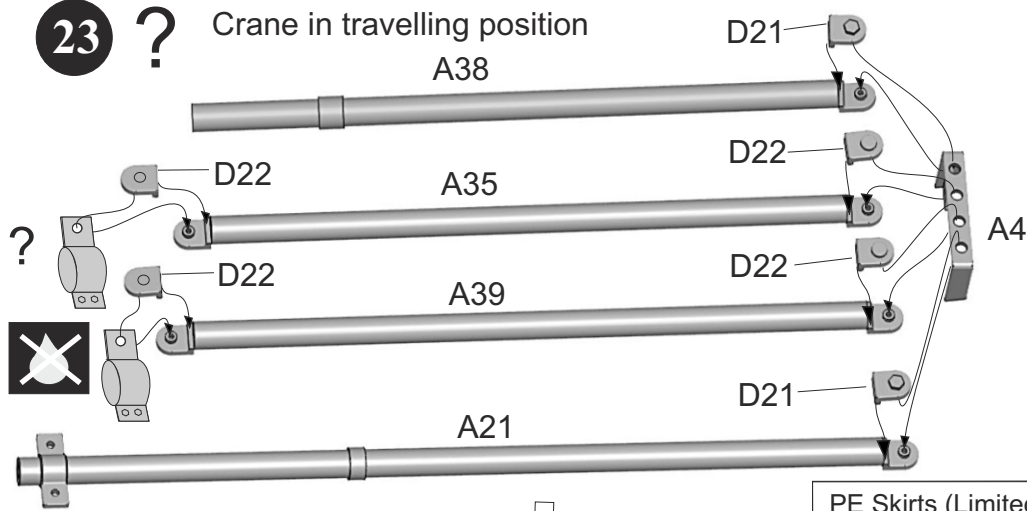
B1, B2 PE option  
Limited Edition only



22

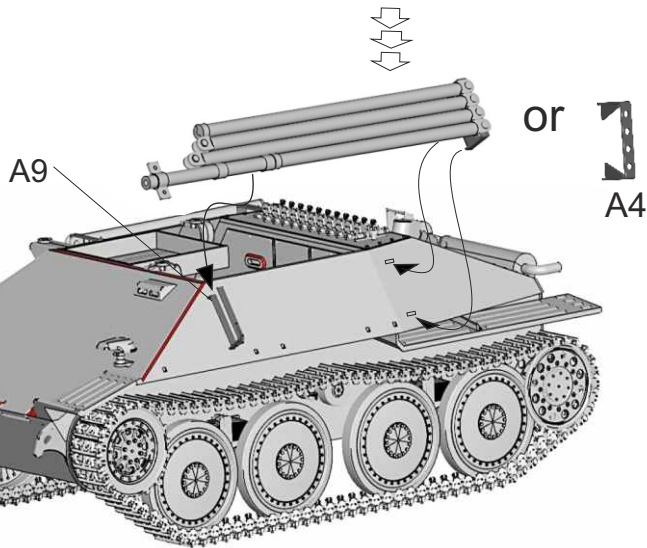
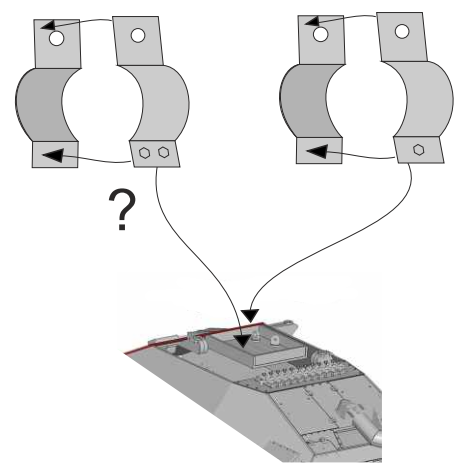


# 23 ? Crane in travelling position

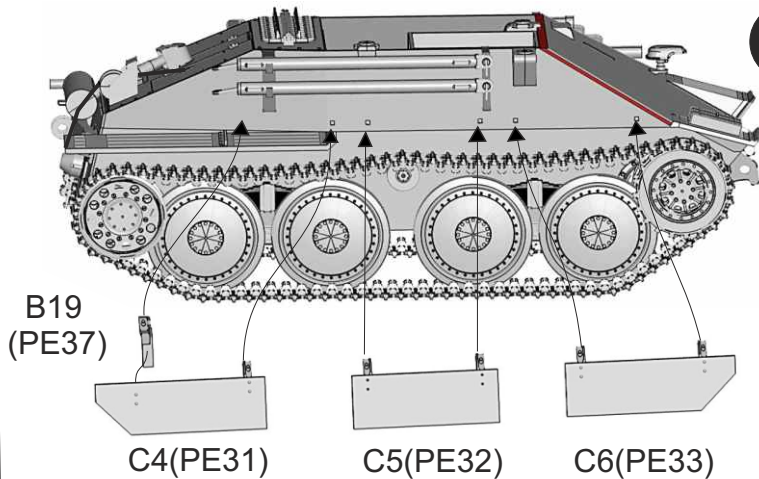
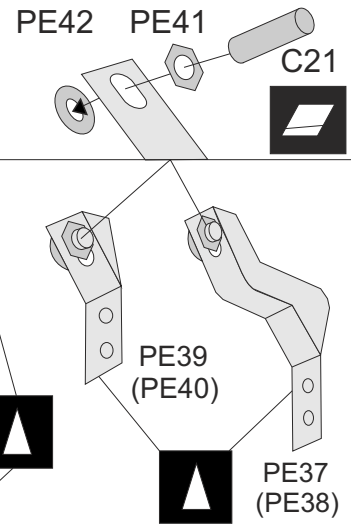
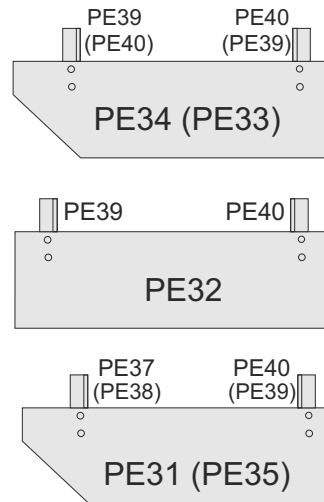


PE22 Make three

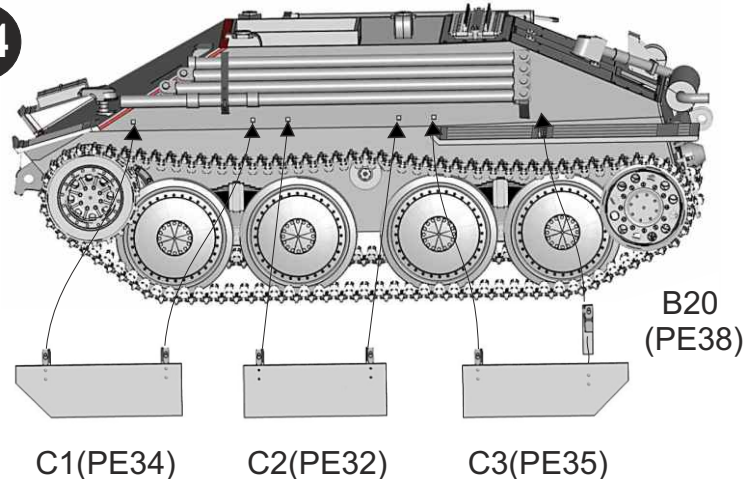
PE23



PE Skirts (Limited edition only)

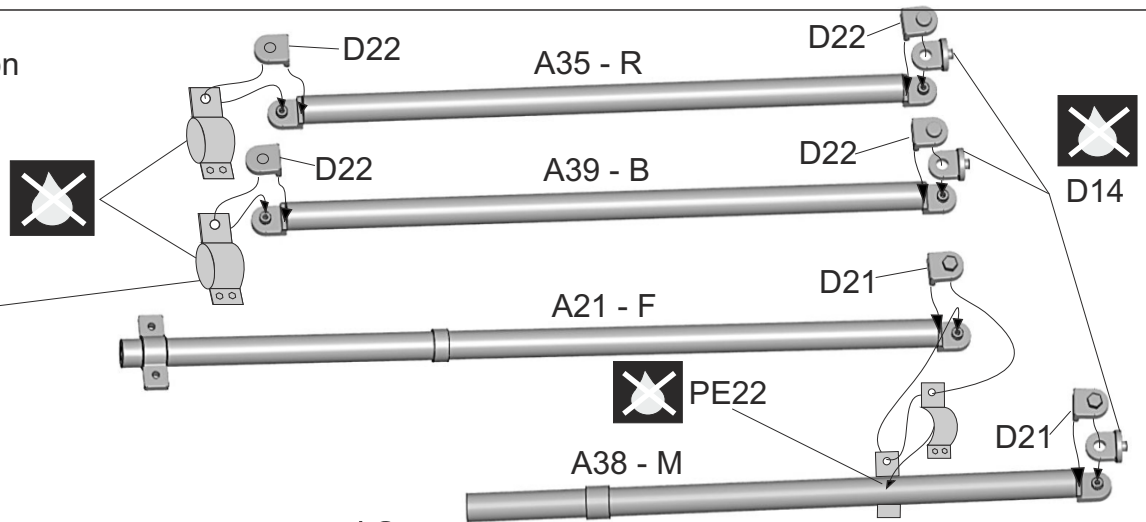


24

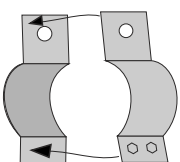


Crane in working position

25 ?



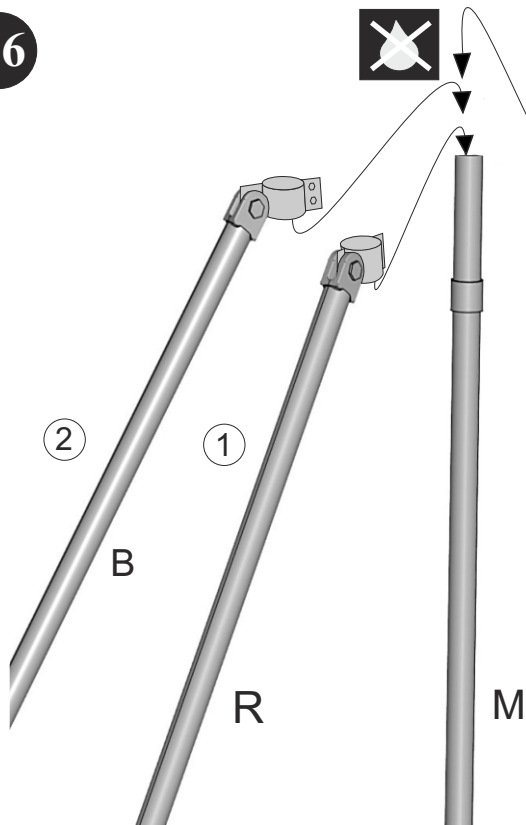
PE22



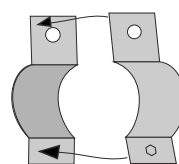
Make two



26



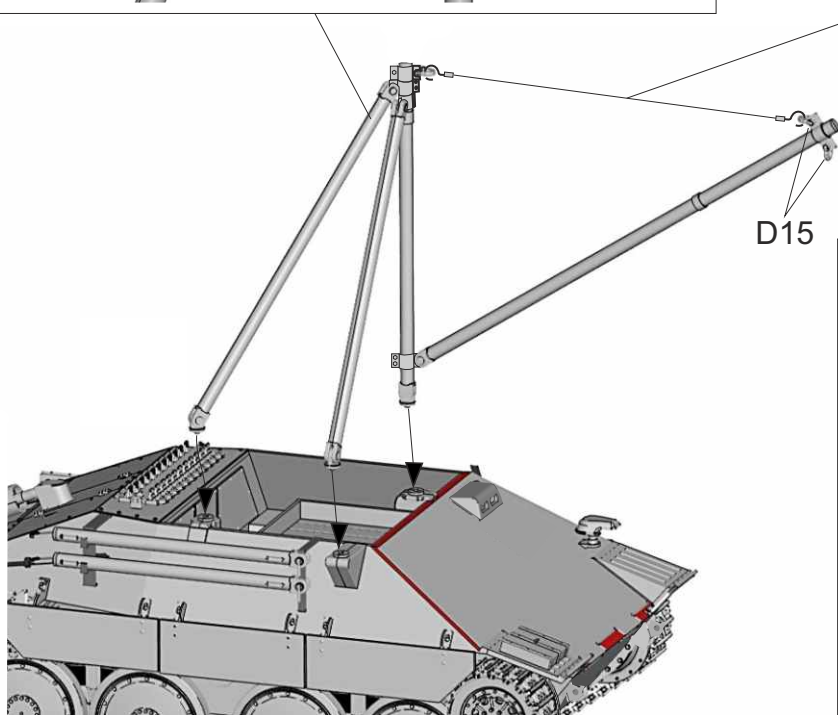
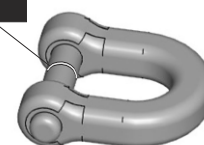
3



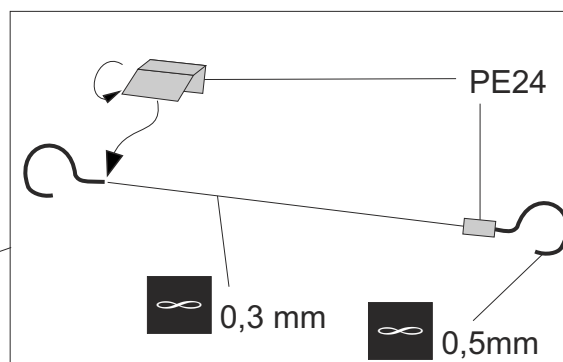
PE23



D15



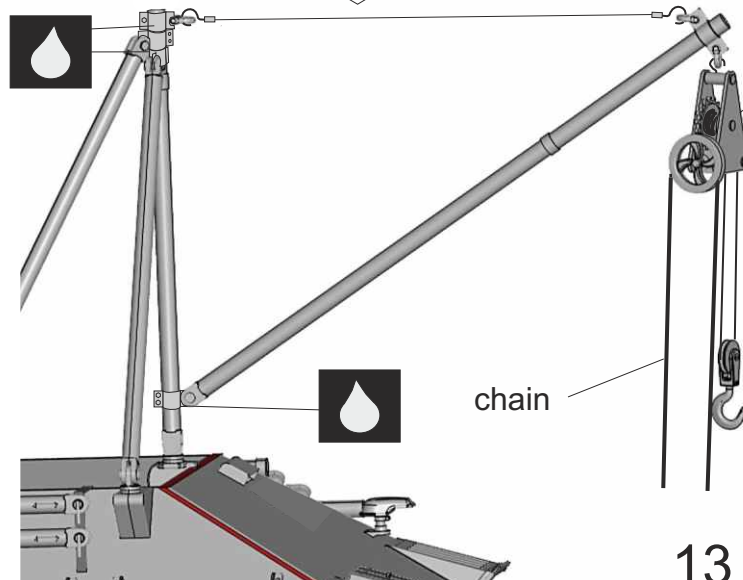
D15



PE24

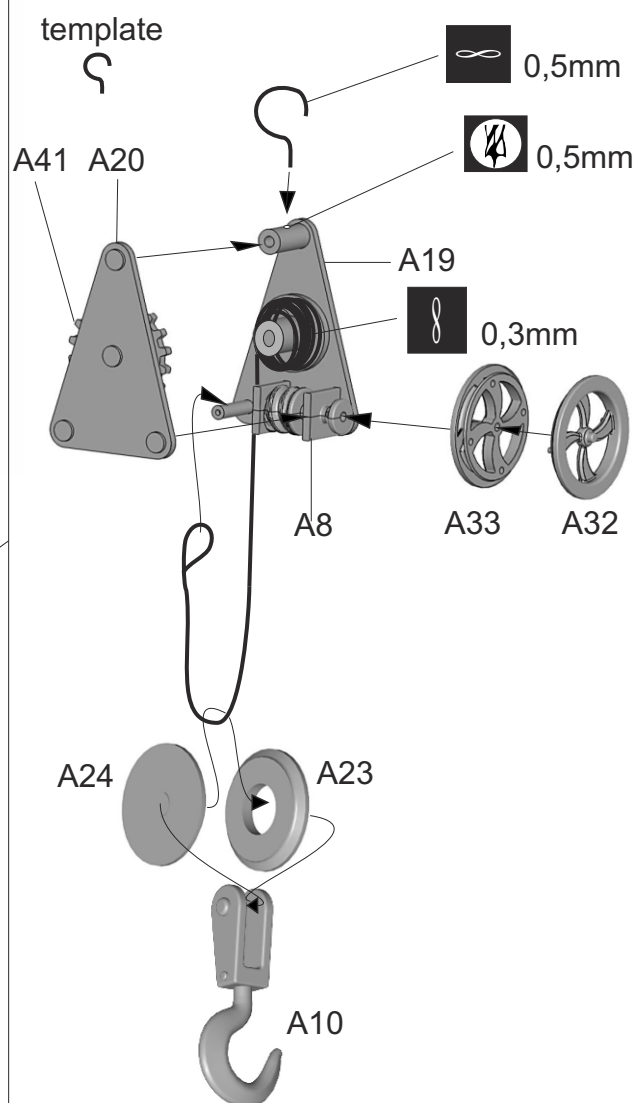
0,3 mm

0,5mm



chain

13



template



0,5mm

0,5mm

0,3mm

A8

A33

A32

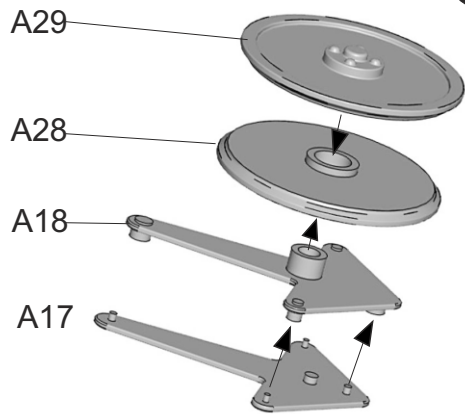
A24

A23

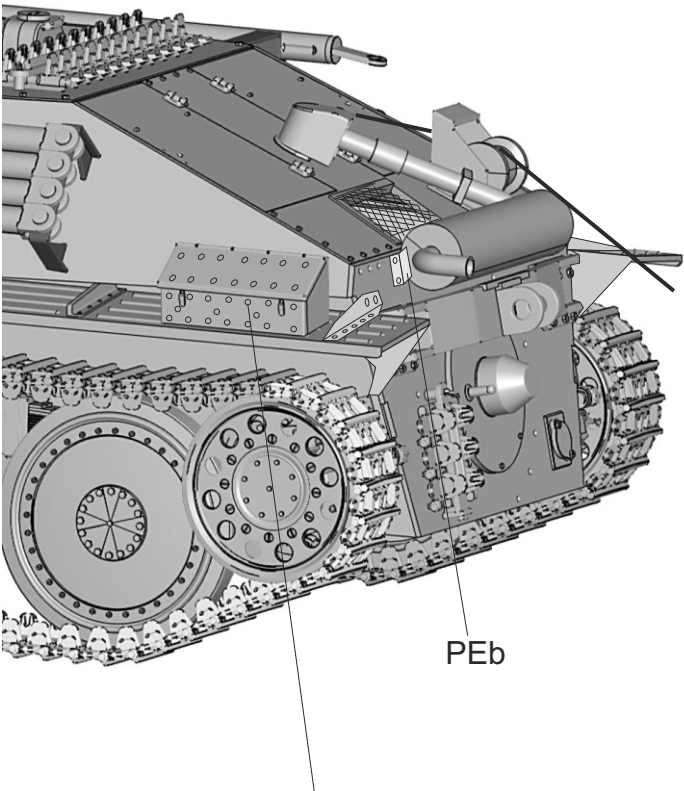
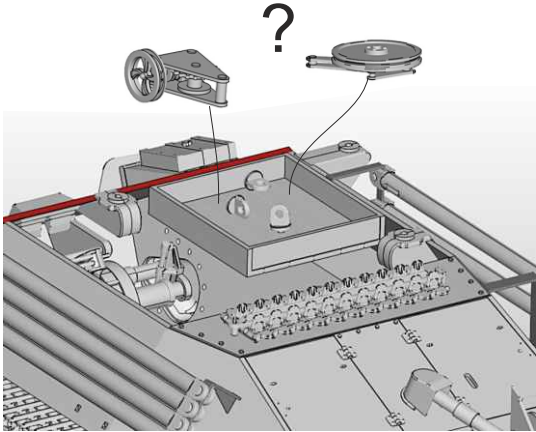
A10



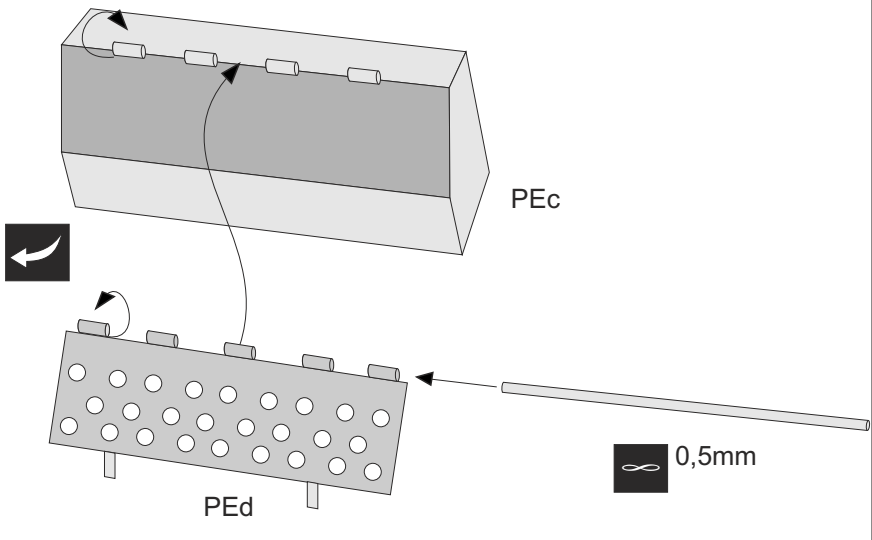
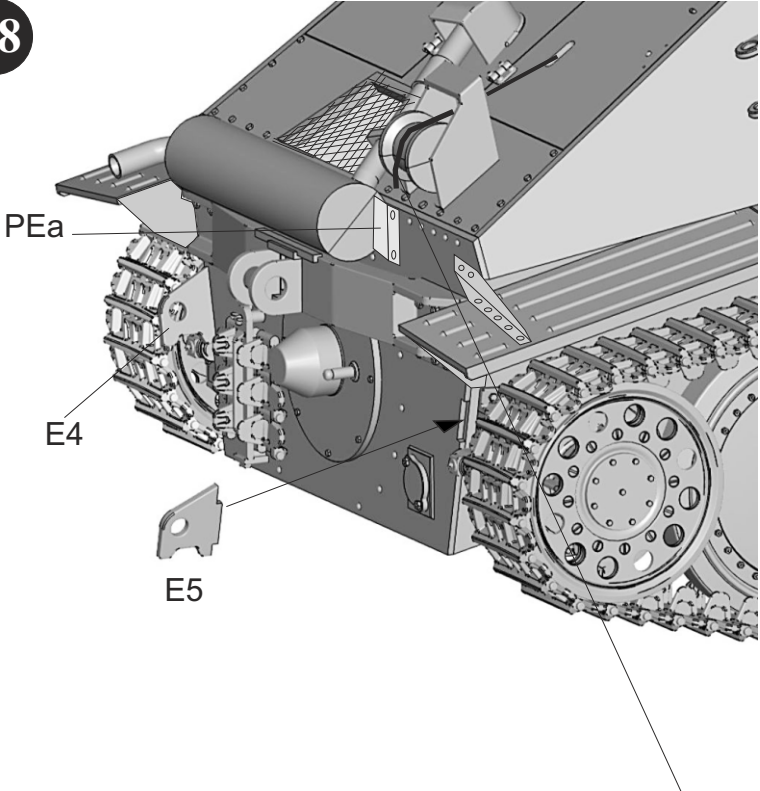
Pulley assembly



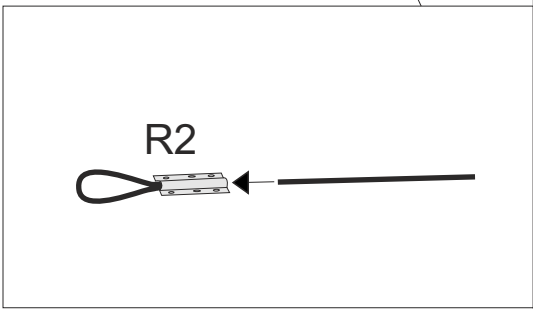
27

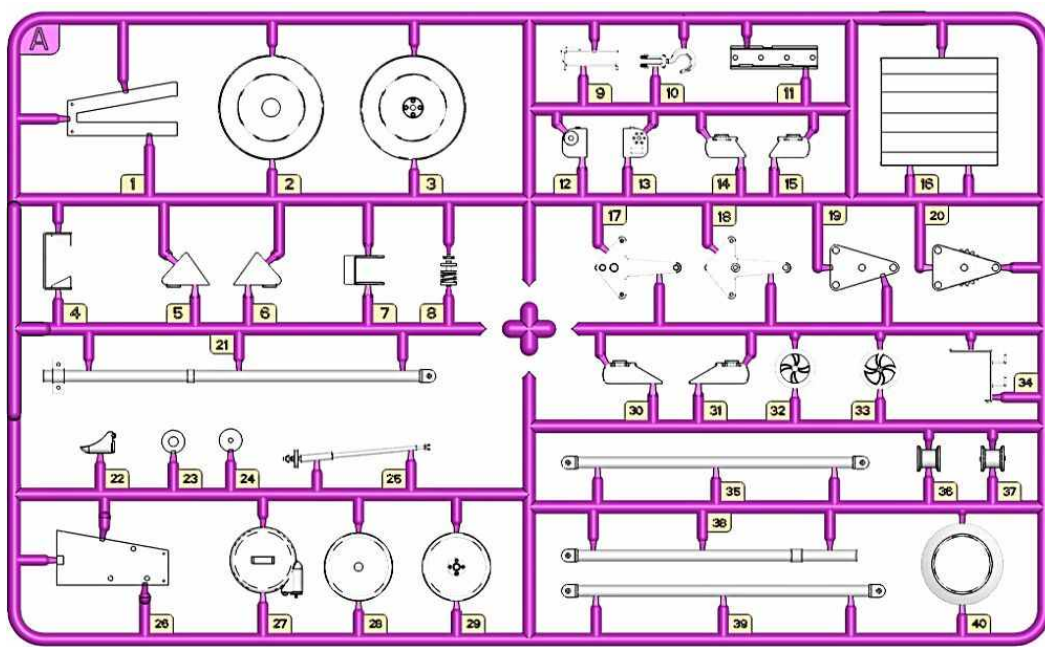


28

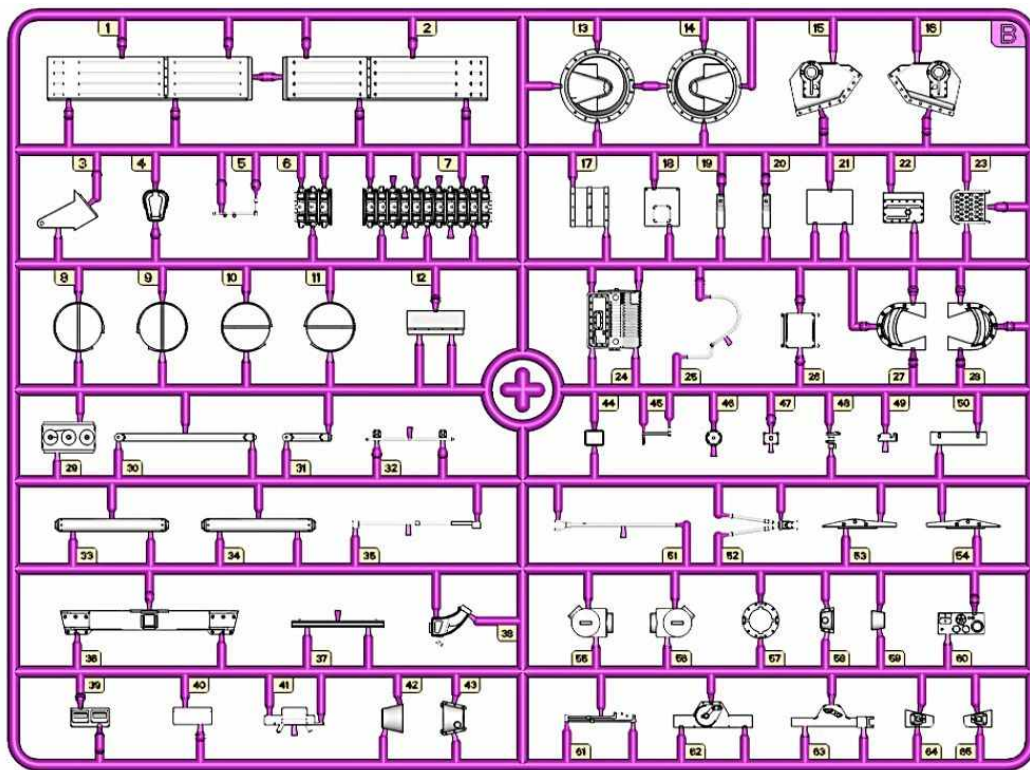


C/A

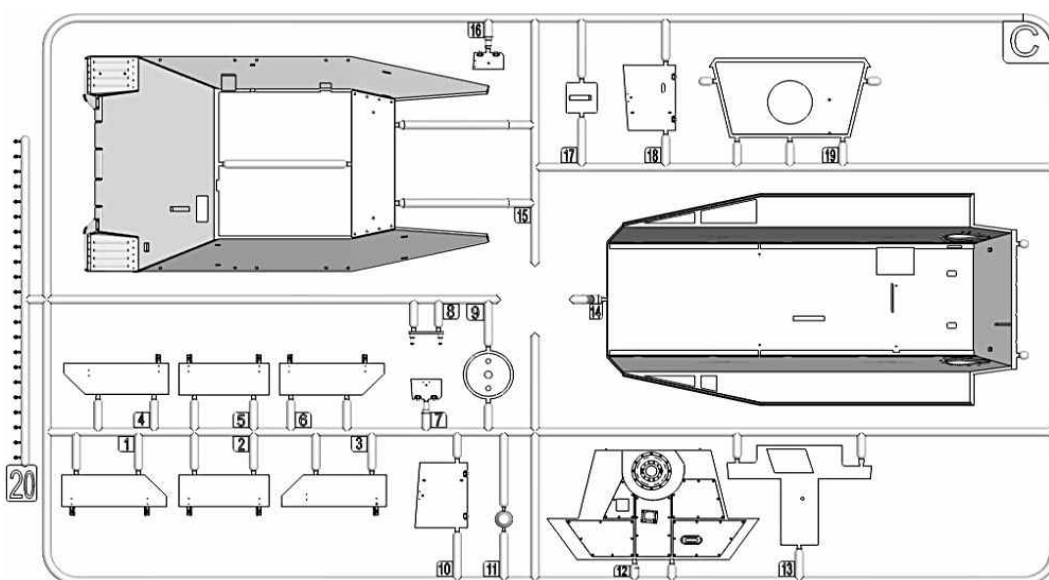




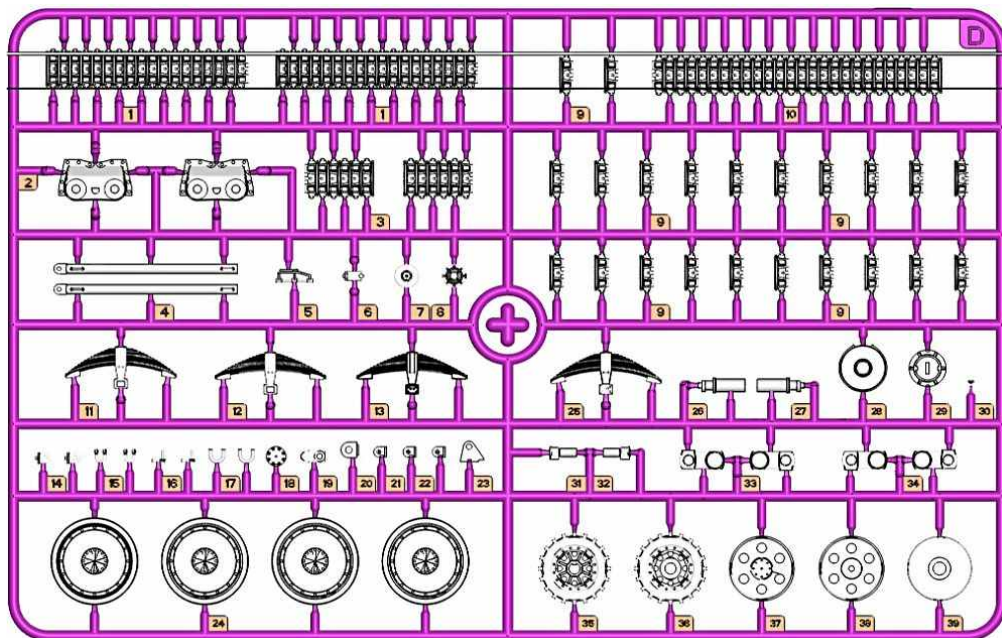
A x1



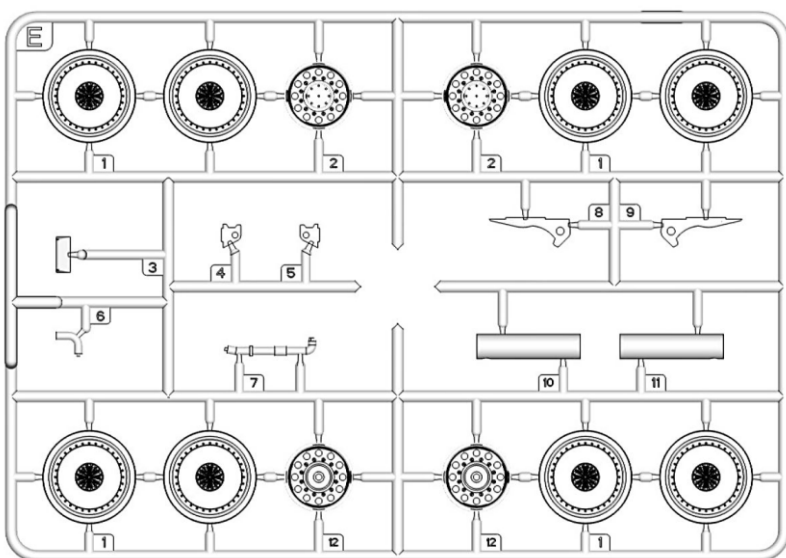
B x1



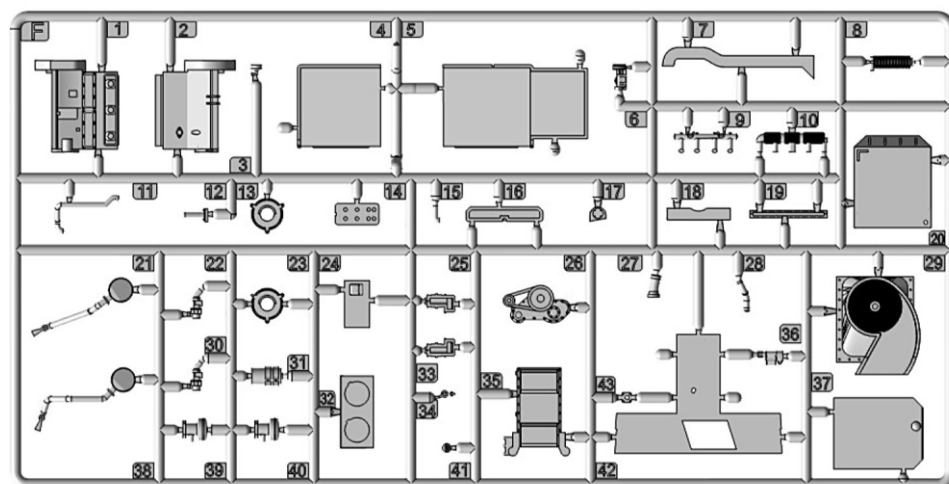
C x1



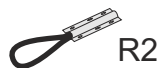
D x2



E x1



F x1  
Limited edition only



Visit us at [www.Thundermodel.com](http://www.Thundermodel.com) for news, kit reviews links, gallery and assembly tips